

Product Name: Epiregulin Rabbit Polyclonal Antibody
Catalog #: APRab10544



Summary

Production Name	Epiregulin Rabbit Polyclonal Antibody
Description	Rabbit Polyclonal Antibody
Host	Rabbit
Application	IHC,ELISA
Reactivity	Human,Mouse,Rat

Performance

Conjugation	Unconjugated
Modification	Unmodified
Isotype	IgG
Clonality	Polyclonal
Form	Liquid
Storage	Store at 4°C short term. Aliquot and store at -20°C long term. Avoid freeze/thaw cycles.
Buffer	Liquid in PBS containing 50% glycerol, 0.5% BSA and 0.02% New type preservative N.
Purification	Affinity purification

Immunogen

Gene Name	EREG
Alternative Names	Proepiregulin [Cleaved into: Epiregulin (EPR)]
Gene ID	2069.0
SwissProt ID	O14944.Synthetic peptide from human protein at AA range: 71-120

Application

Dilution Ratio IHC 1:50-200 ELISA 1:10000-20000

Molecular Weight

Background

This gene encodes a secreted peptide hormone and member of the epidermal growth factor (EGF) family of proteins. The encoded protein is a ligand of the epidermal growth factor receptor (EGFR) and the structurally related erb-b2 receptor

Product Name: Epiregulin Rabbit Polyclonal Antibody
Catalog #: APRab10544

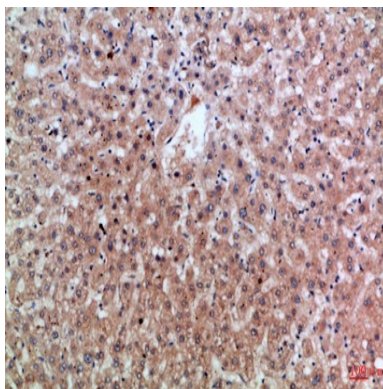


tyrosine kinase 4 (ERBB4). The encoded protein may be involved in a wide range of biological processes including inflammation, wound healing, oocyte maturation, and cell proliferation. Additionally, the encoded protein may promote the progression of cancers of various human tissues. [provided by RefSeq, Jul 2015],function:May be a mediator of localized cell proliferation. As a mitogen it may stimulate cell proliferation and/or angiogenesis.,similarity:Contains 1 EGF-like domain.,tissue specificity:In normal adults, expressed predominantly in the placenta and peripheral blood leukocytes. High levels were detected in carcinomas of the bladder, lung, kidney and colon.,

Research Area

ErbB_HER;

Image Data



Immunohistochemical analysis of paraffin-embedded Human-liver, antibody was diluted at 1:100

Note

For research use only.