

Product Name: EphA5 Rabbit Polyclonal Antibody
Catalog #: APRab10520



Summary

Production Name	EphA5 Rabbit Polyclonal Antibody
Description	Rabbit Polyclonal Antibody
Host	Rabbit
Application	WB,ELISA
Reactivity	Human,Mouse,Rat

Performance

Conjugation	Unconjugated
Modification	Unmodified
Isotype	IgG
Clonality	Polyclonal
Form	Liquid
Storage	Store at 4°C short term. Aliquot and store at -20°C long term. Avoid freeze/thaw cycles.
Buffer	Liquid in PBS containing 50% glycerol, 0.5% BSA and 0.02% New type preservative N.
Purification	Affinity purification

Immunogen

Gene Name	EPHA5
Alternative Names	EPHA5; BSK; EHK1; HEK7; TYRO4; Ephrin type-A receptor 5; Brain-specific kinase; EPH homology kinase 1; EHK-1; EPH-like kinase 7; EK7; hEK7
Gene ID	2044.0
SwissProt ID	P54756.The antiserum was produced against synthesized peptide derived from human EPHA5. AA range:471-520

Application

Dilution Ratio	WB 1:500 - 1:2000. ELISA: 1:20000. Not yet tested in other applications.
Molecular Weight	110kD

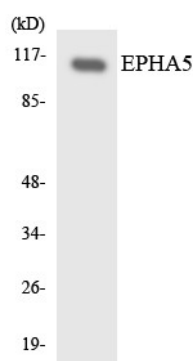
Background

This gene belongs to the ephrin receptor subfamily of the protein-tyrosine kinase family. EPH and EPH-related receptors have been implicated in mediating developmental events, particularly in the nervous system. Receptors in the EPH subfamily typically have a single kinase domain and an extracellular region containing a Cys-rich domain and 2 fibronectin type III repeats. The ephrin receptors are divided into 2 groups based on the similarity of their extracellular domain sequences and their affinities for binding ephrin-A and ephrin-B ligands. Alternatively spliced transcript variants encoding different isoforms have been described. [provided by RefSeq, Aug 2013],alternative products:Additional isoforms seem to exist,catalytic activity:ATP + a [protein]-L-tyrosine = ADP + a [protein]-L-tyrosine phosphate.,function:Receptor for members of the ephrin-A family. Binds to ephrin-A1, -A2, -A3, -A4 and -A5.,similarity:Belongs to the protein kinase superfamily. Tyr protein kinase family.,similarity:Belongs to the protein kinase superfamily. Tyr protein kinase family. Ephrin receptor subfamily.,similarity:Contains 1 protein kinase domain.,similarity:Contains 1 SAM (sterile alpha motif) domain.,similarity:Contains 2 fibronectin type-III domains.,tissue specificity:Almost exclusively expressed in the nervous system.,

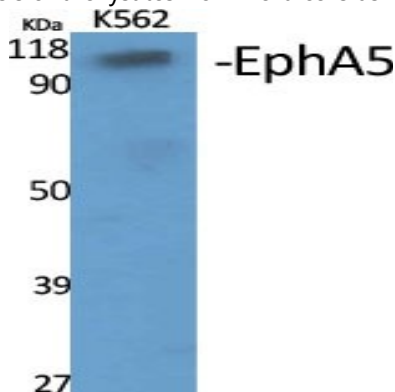
Research Area

Axon guidance;

Image Data



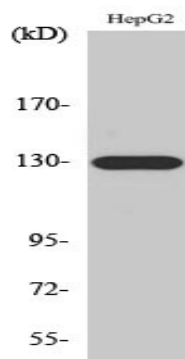
Western blot analysis of the lysates from HeLa cells using EPHA5 antibody.



Product Name: EphA5 Rabbit Polyclonal Antibody
Catalog #: APRab10520



Western Blot analysis of various cells using EphA5 Polyclonal Antibody



Western Blot analysis of A549 cells using EphA5 Polyclonal Antibody

Note

For research use only.