

Product Name: Endomucin Rabbit Polyclonal Antibody
Catalog #: APRab10465



Summary

Production Name	Endomucin Rabbit Polyclonal Antibody
Description	Rabbit Polyclonal Antibody
Host	Rabbit
Application	IF,ELISA
Reactivity	Human,Mouse,Rat

Performance

Conjugation	Unconjugated
Modification	Unmodified
Isotype	IgG
Clonality	Polyclonal
Form	Liquid
Storage	Store at 4°C short term. Aliquot and store at -20°C long term. Avoid freeze/thaw cycles.
Buffer	Liquid in PBS containing 50% glycerol, 0.5% BSA and 0.02% New type preservative N.
Purification	Affinity purification

Immunogen

Gene Name	EMCN
Alternative Names	EMCN; EMCN2; MUC14; Endomucin; Endomucin-2; Gastric cancer antigen Ga34; Mucin-14; MUC-14
Gene ID	51705.0
SwissProt ID	Q9ULC0.The antiserum was produced against synthesized peptide derived from human Mucin-14. AA range:201-250

Application

Dilution Ratio	IF 1:200-1:1000. ELISA: 1:5000.
Molecular Weight	

Background

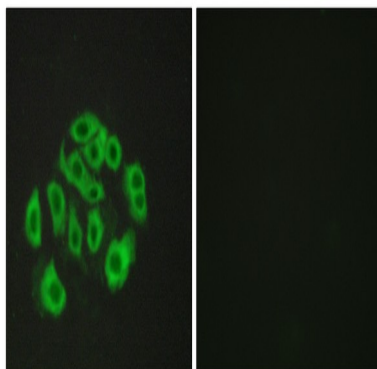
Product Name: Endomucin Rabbit Polyclonal Antibody
Catalog #: APRab10465



endomucin(EMCN) Homo sapiens EMCN is a mucin-like sialoglycoprotein that interferes with the assembly of focal adhesion complexes and inhibits interaction between cells and the extracellular matrix (Kinoshita et al., 2001 [PubMed 11418125]).[supplied by OMIM, Mar 2008],function:Endothelial sialomucin, also called endomucin or mucin-like sialoglycoprotein, which interferes with the assembly of focal adhesion complexes and inhibits interaction between cells and the extracellular matrix.,PTM:Highly O-glycosylated. Sialic acid-rich glycoprotein.,subcellular location:Consistently localized to the plasma membrane and less abundantly to Golgi-like perinuclear stacks.,tissue specificity:Expressed in heart, kidney and lung.,

Research Area

Image Data



Immunofluorescence analysis of HepG2 cells, using Mucin-14 Antibody. The picture on the right is blocked with the synthesized peptide.

Note

For research use only.