

Summary

Production Name	ENaCδ Rabbit Polyclonal Antibody
Description	Rabbit Polyclonal Antibody
Host	Rabbit
Application	IF,ELISA
Reactivity	Human,Rat,Mouse

Performance

Conjugation	Unconjugated
Modification	Unmodified
Isotype	IgG
Clonality	Polyclonal
Form	Liquid
Storage	Store at 4°C short term. Aliquot and store at -20°C long term. Avoid freeze/thaw cycles.
Buffer	Liquid in PBS containing 50% glycerol, 0.5% BSA and 0.02% New type preservative N.
Purification	Affinity purification

Immunogen

Gene Name	SCNN1D SCNN1D; DNACH; Amiloride-sensitive sodium channel subunit delta; Delta-NaCH;
Alternative Names	Epithelial Na(+) channel subunit delta; Delta-ENaC; ENaCD; Nonvoltage-gated sodium channel 1 subunit delta; SCNED
Gene ID	6339.0
SwissProt ID	P51172.The antiserum was produced against synthesized peptide derived from human SCNN1D. AA range:411-460

Application

Dilution Ratio	IF 1:200-1:1000. ELISA: 1:20000.
Molecular Weight	70kD

Product Name: ENaC δ Rabbit Polyclonal Antibody
Catalog #: APRab10455

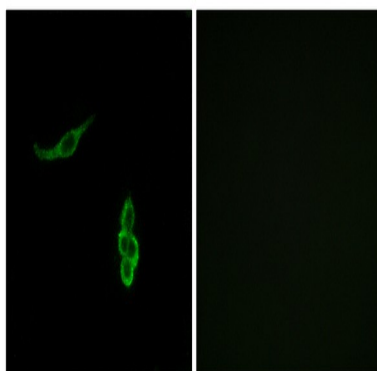


Background

function:Sodium permeable non-voltage-sensitive ion channel inhibited by the diuretic amiloride. Mediates the electrodiffusion of the luminal sodium (and water, which follows osmotically) through the apical membrane of epithelial cells. Controls the reabsorption of sodium in kidney, colon, lung and sweat glands. Also plays a role in taste perception.,similarity:Belongs to the amiloride-sensitive sodium channel family.,subunit:Heterotetramer of two alpha, one beta and one gamma subunit. A delta subunit can replace the alpha subunit.,function:Sodium permeable non-voltage-sensitive ion channel inhibited by the diuretic amiloride. Mediates the electrodiffusion of the luminal sodium (and water, which follows osmotically) through the apical membrane of epithelial cells. Controls the reabsorption of sodium in kidney, colon, lung and sweat glands. Also plays a role in taste perception.,similarity:Belongs to the amiloride-sensitive sodium channel family.,subunit:Heterotetramer of two alpha, one beta and one gamma subunit. A delta subunit can replace the alpha subunit.,

Research Area

Image Data



Immunofluorescence analysis of A549 cells, using SCNN1D Antibody. The picture on the right is blocked with the synthesized peptide.

Note

For research use only.