

**Product Name: ENA-78 Rabbit Polyclonal Antibody**  
**Catalog #: APRab10452**



## Summary

<b>Production Name</b>	ENA-78 Rabbit Polyclonal Antibody
<b>Description</b>	Rabbit Polyclonal Antibody
<b>Host</b>	Rabbit
<b>Application</b>	IHC,ELISA
<b>Reactivity</b>	Human,Rat,Mouse

## Performance

<b>Conjugation</b>	Unconjugated
<b>Modification</b>	Unmodified
<b>Isotype</b>	IgG
<b>Clonality</b>	Polyclonal
<b>Form</b>	Liquid
<b>Storage</b>	Store at 4°C short term. Aliquot and store at -20°C long term. Avoid freeze/thaw cycles.
<b>Buffer</b>	Liquid in PBS containing 50% glycerol, 0.5% BSA and 0.02% New type preservative N.
<b>Purification</b>	Affinity purification

## Immunogen

<b>Gene Name</b>	CXCL5 ENA78 SCYB5
<b>Alternative Names</b>	C-X-C motif chemokine 5 (ENA-78(1-78);Epithelial-derived neutrophil-activating protein 78;Neutrophil-activating peptide ENA-78;Small-inducible cytokine B5) [Cleaved into: ENA-78(8-78); ENA-78(9-78)]
<b>Gene ID</b>	6374.0
<b>SwissProt ID</b>	P42830.Synthetic peptide from human protein at AA range: 65-114

## Application

<b>Dilution Ratio</b>	IHC-p 1:50-200, ELISA 1:10000-20000.
<b>Molecular Weight</b>	

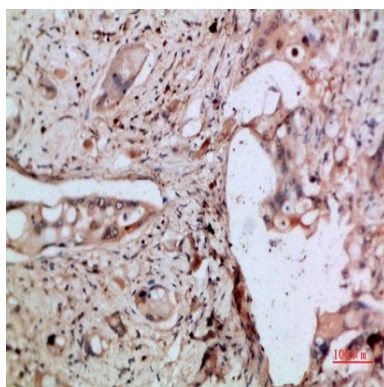
## Background

This gene encodes a protein that is a member of the CXC subfamily of chemokines. Chemokines, which recruit and activate leukocytes, are classified by function (inflammatory or homeostatic) or by structure. This protein is proposed to bind the G-protein coupled receptor chemokine (C-X-C motif) receptor 2 to recruit neutrophils, to promote angiogenesis and to remodel connective tissues. This protein is thought to play a role in cancer cell proliferation, migration, and invasion. [provided by RefSeq, May 2013],function:Involved in neutrophil activation. In vitro, ENA-78(8-78) and ENA-78(9-78) show a threefold higher chemotactic activity for neutrophil granulocytes.,online information:CXCL5 entry,PTM:N-terminal processed forms ENA-78(8-78) and ENA-78(9-78) are produced by proteolytic cleavage after secretion from peripheral blood monocytes.,similarity:Belongs to the intercrine alpha (chemokine Cx) family.,

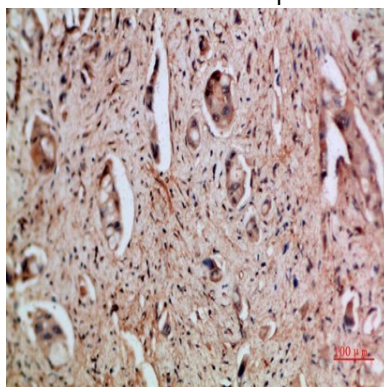
## Research Area

Cytokine-cytokine receptor interaction;Chemokine;

## Image Data



Immunohistochemical analysis of paraffin-embedded human-pancreas-cancer, antibody was diluted at 1:200



Immunohistochemical analysis of paraffin-embedded human-pancreas-cancer, antibody was diluted at 1:200

## Note

For research use only.

**Product Name: ENA-78 Rabbit Polyclonal Antibody**  
**Catalog #: APRab10452**

---

