

Product Name: ELOF1 Rabbit Polyclonal Antibody
Catalog #: APRab10418



Summary

| | |
|------------------------|----------------------------------|
| Production Name | ELOF1 Rabbit Polyclonal Antibody |
| Description | Rabbit Polyclonal Antibody |
| Host | Rabbit |
| Application | WB,ELISA |
| Reactivity | Human,Mouse,Rat |

Performance

| | |
|---------------------|--|
| Conjugation | Unconjugated |
| Modification | Unmodified |
| Isotype | IgG |
| Clonality | Polyclonal |
| Form | Liquid |
| Storage | Store at 4°C short term. Aliquot and store at -20°C long term. Avoid freeze/thaw cycles. |
| Buffer | Liquid in PBS containing 50% glycerol, 0.5% BSA and 0.02% New type preservative N. |
| Purification | Affinity purification |

Immunogen

| | |
|--------------------------|--|
| Gene Name | ELOF1 |
| Alternative Names | Transcription elongation factor 1 homolog |
| Gene ID | 84337.0 |
| SwissProt ID | P60002.Synthesized peptide derived from human ELOF1 AA range: 30-110 |

Application

| | |
|-------------------------|---|
| Dilution Ratio | IHC 1:50-200 ELISA(peptide)1:5000-20000 |
| Molecular Weight | |

Background

function:Transcription elongation factor implicated in the maintenance of proper chromatin structure in actively transcribed regions.,similarity:Belongs to the ELOF1 family.,function:Transcription elongation factor implicated in the maintenance of

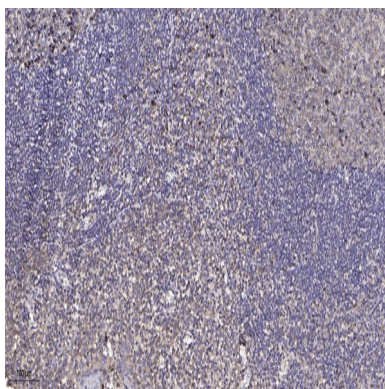
Product Name: ELOF1 Rabbit Polyclonal Antibody
Catalog #: APRab10418



proper chromatin structure in actively transcribed regions.,similarity:Belongs to the ELOF1 family.,

Research Area

Image Data



Immunohistochemical analysis of paraffin-embedded human tonsil. 1, Antibody was diluted at 1:200 (4° overnight) . 2, Tris-EDTA,pH9.0 was used for antigen retrieval. 3,Secondary antibody was diluted at 1:200 (room temperature, 45min) .

Note

For research use only.