

Product Name: ELL2 Rabbit Polyclonal Antibody
Catalog #: APRab10407



Summary

Production Name	ELL2 Rabbit Polyclonal Antibody
Description	Rabbit Polyclonal Antibody
Host	Rabbit
Application	IHC,ELISA
Reactivity	Human,Mouse

Performance

Conjugation	Unconjugated
Modification	Unmodified
Isotype	IgG
Clonality	Polyclonal
Form	Liquid
Storage	Store at 4°C short term. Aliquot and store at -20°C long term. Avoid freeze/thaw cycles.
Buffer	Liquid in PBS containing 50% glycerol, 0.5% BSA and 0.02% New type preservative N.
Purification	Affinity purification

Immunogen

Gene Name	ELL2
Alternative Names	ELL2; RNA polymerase II elongation factor ELL2
Gene ID	22936.0
SwissProt ID	O00472.The antiserum was produced against synthesized peptide derived from human ELL2. AA range:448-497

Application

Dilution Ratio	IHC 1:100-1:300 ELISA: 1:20000
Molecular Weight	

Background

function:Elongation factor that can increase the catalytic rate of RNA polymerase II transcription by suppressing transient

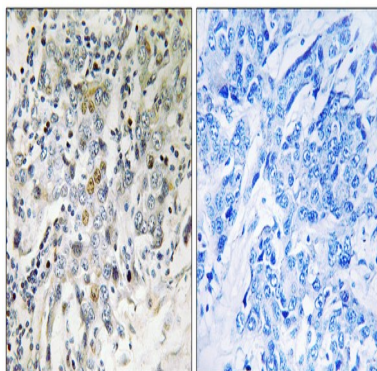
Product Name: ELL2 Rabbit Polyclonal Antibody
Catalog #: APRab10407



pausing by the polymerase at multiple sites along the DNA.,similarity:Belongs to the ELL/occludin family.,subunit:Interacts with EAF1 and EAF2.,function:Elongation factor that can increase the catalytic rate of RNA polymerase II transcription by suppressing transient pausing by the polymerase at multiple sites along the DNA.,similarity:Belongs to the ELL/occludin family.,subunit:Interacts with EAF1 and EAF2.,

Research Area

Image Data



Immunohistochemistry analysis of paraffin-embedded human breast carcinoma tissue, using ELL2 Antibody. The picture on the right is blocked with the synthesized peptide.

Note

For research use only.