

Product Name: eIF5B Rabbit Polyclonal Antibody
Catalog #: APRab10395



Summary

| | |
|------------------------|----------------------------------|
| Production Name | eIF5B Rabbit Polyclonal Antibody |
| Description | Rabbit Polyclonal Antibody |
| Host | Rabbit |
| Application | WB,IHC,ELISA |
| Reactivity | Human,Mouse,Rat |

Performance

| | |
|---------------------|--|
| Conjugation | Unconjugated |
| Modification | Unmodified |
| Isotype | IgG |
| Clonality | Polyclonal |
| Form | Liquid |
| Storage | Store at 4°C short term. Aliquot and store at -20°C long term. Avoid freeze/thaw cycles. |
| Buffer | Liquid in PBS containing 50% glycerol, 0.5% BSA and 0.02% New type preservative N. |
| Purification | Affinity purification |

Immunogen

| | |
|--------------------------|---|
| Gene Name | EIF5B |
| Alternative Names | EIF5B; IF2; KIAA0741; Eukaryotic translation initiation factor 5B; eIF-5B; Translation initiation factor IF-2 |
| Gene ID | 9669.0 |
| SwissProt ID | O60841.The antiserum was produced against synthesized peptide derived from human EIF5B. AA range:1051-1100 |

Application

| | |
|-------------------------|--|
| Dilution Ratio | WB 1:500 - 1:2000. IHC 1:100 - 1:300. ELISA: 1:40000.. |
| Molecular Weight | 139kD |

Product Name: eIF5B Rabbit Polyclonal Antibody
Catalog #: APRab10395

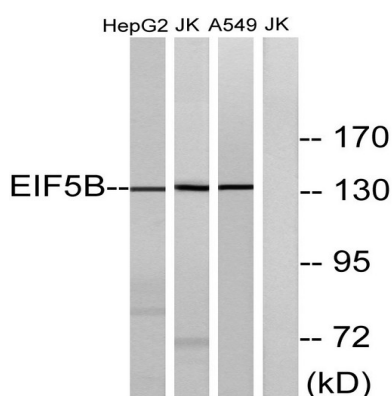


Background

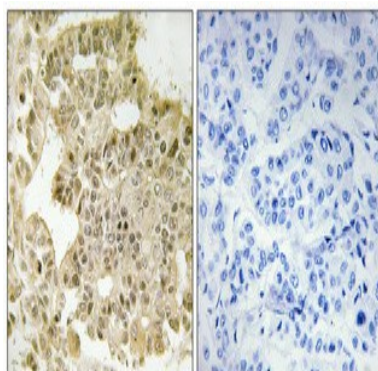
Accurate initiation of translation in eukaryotes is complex and requires many factors, some of which are composed of multiple subunits. The process is simpler in prokaryotes which have only three initiation factors (IF1, IF2, IF3). Two of these factors are conserved in eukaryotes: the homolog of IF1 is eIF1A and the homolog of IF2 is eIF5B. This gene encodes eIF5B. Factors eIF1A and eIF5B interact on the ribosome along with other initiation factors and GTP to position the initiation methionine tRNA on the start codon of the mRNA so that translation initiates accurately. [provided by RefSeq, Jul 2008],function:Function in general translation initiation by promoting the binding of the formylmethionine-tRNA to ribosomes. Seems to function along with eIF-2.,similarity:Belongs to the IF-2 family.,subunit:Interacts with ANXA5 in a calcium and phospholipid-dependent manner.,

Research Area

Image Data



Western blot analysis of lysates from Jurkat, HepG2, and A549 cells, using EIF5B Antibody. The lane on the right is blocked with the synthesized peptide.



Immunohistochemical analysis of paraffin-embedded Human breast cancer. Antibody was diluted at 1:100 (4°,overnight) . High-pressure and temperature Tris-EDTA,pH8.0 was used for antigen retrieval. Negative contrl (right) obtained from antibody was pre-absorbed by immunogen peptide.

Product Name: eIF5B Rabbit Polyclonal Antibody
Catalog #: APRab10395



Note

For research use only.