

Product Name: eIF4E3 Rabbit Polyclonal Antibody
Catalog #: APRab10388



Summary

Production Name	eIF4E3 Rabbit Polyclonal Antibody
Description	Rabbit Polyclonal Antibody
Host	Rabbit
Application	WB,ELISA
Reactivity	Human,Mouse,Rat

Performance

Conjugation	Unconjugated
Modification	Unmodified
Isotype	IgG
Clonality	Polyclonal
Form	Liquid
Storage	Store at 4°C short term. Aliquot and store at -20°C long term. Avoid freeze/thaw cycles.
Buffer	Liquid in PBS containing 50% glycerol, 0.5% BSA and 0.02% New type preservative N.
Purification	Affinity purification

Immunogen

Gene Name	EIF4E3
Alternative Names	EIF4E3; Eukaryotic translation initiation factor 4E type 3; eIF-4E type 3; eIF-4E3; eIF4E type 3; eIF4E-3
Gene ID	317649.0
SwissProt ID	Q8N5X7.The antiserum was produced against synthesized peptide derived from human EIF4E3. AA range:141-190

Application

Dilution Ratio	WB 1:500 - 1:2000. ELISA: 1:10000. Not yet tested in other applications.
Molecular Weight	24kD

Product Name: eIF4E3 Rabbit Polyclonal Antibody
Catalog #: AP Rab10388

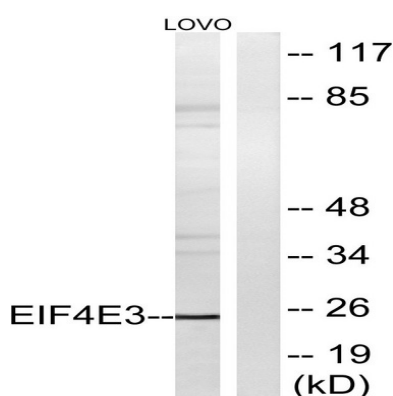


Background

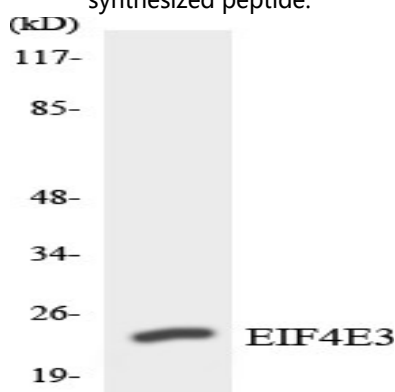
EIF4E3 belongs to the EIF4E family of translational initiation factors that interact with the 5-prime cap structure of mRNA and recruit mRNA to the ribosome (Joshi et al., 2004 [PubMed 15153109]).[supplied by OMIM, Mar 2008],function:Recognizes and binds the 7-methylguanosine-containing mRNA cap during an early step in the initiation of protein synthesis. May act as an inhibitor of EIF4E1 activity.,similarity:Belongs to the eukaryotic initiation factor 4E family.,subunit:EIF4F is a multi-subunit complex, the composition of which varies with external and internal environmental conditions. It is composed of at least eIF4A, eIF4E and eIF4G (By similarity). EIF4E3 interacts with EIF4G1, but not with EIF4EBP1, EIF4EBP2 and EIF4EBP3.,

Research Area

Image Data

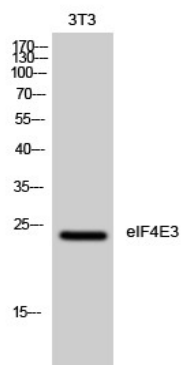


Western blot analysis of lysates from LOVO cells, using EIF4E3 Antibody. The lane on the right is blocked with the synthesized peptide.



Western blot analysis of the lysates from HepG2 cells using EIF4E3 antibody.

Product Name: eIF4E3 Rabbit Polyclonal Antibody
Catalog #: APRab10388



Western Blot analysis of 3T3 cells using eIF4E3 Polyclonal Antibody diluted at 1 : 1000

Note

For research use only.