

Summary

Production Name	EGFL4 Rabbit Polyclonal Antibody
Description	Rabbit Polyclonal Antibody
Host	Rabbit
Application	WB,ELISA
Reactivity	Human,Rat,Mouse

Performance

Conjugation	Unconjugated
Modification	Unmodified
Isotype	IgG
Clonality	Polyclonal
Form	Liquid
Storage	Store at 4°C short term. Aliquot and store at -20°C long term. Avoid freeze/thaw cycles.
Buffer	Liquid in PBS containing 50% glycerol, 0.5% BSA and 0.02% New type preservative N.
Purification	Affinity purification

Immunogen

Gene Name	MEGF8 MEGF8; C19orf49; EGFL4; KIAA0817; Multiple epidermal growth factor-like domains protein 8; Multiple EGF-like domains protein 8; Epidermal growth factor-like protein 4; EGF-like protein 4
Alternative Names	
Gene ID	1954.0
SwissProt ID	Q7Z7M0.The antiserum was produced against synthesized peptide derived from human MEGF8. AA range:1243-1292

Application

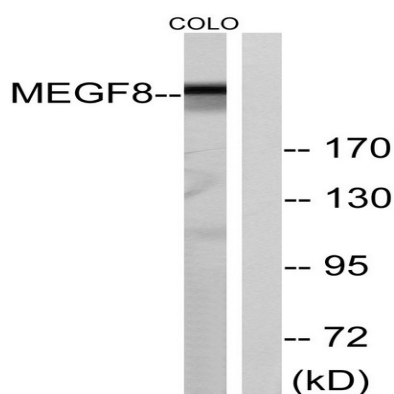
Dilution Ratio	WB 1:500 - 1:2000. ELISA: 1:20000..
Molecular Weight	255kD

Background

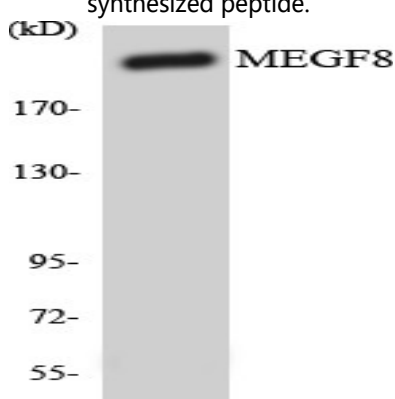
The protein encoded by this gene is a single-pass type I membrane protein of unknown function that contains several EGF-like domains, Kelch repeats, and PSI domains. Defects in this gene are a cause of Carpenter syndrome 2. Two transcript variants encoding different isoforms have been found for this gene. [provided by RefSeq, Dec 2012],similarity:Contains 12 Kelch repeats.,similarity:Contains 2 CUB domains.,similarity:Contains 4 laminin EGF-like domains.,similarity:Contains 5 EGF-like domains.,similarity:Contains 7 PSI domains.,

Research Area

Image Data



Western blot analysis of lysates from COLO cells, using MEGF8 Antibody. The lane on the right is blocked with the synthesized peptide.



Western blot analysis of the lysates from COLO205 cells using MEGF8 antibody.

Product Name: EGFL4 Rabbit Polyclonal Antibody
Catalog #: APRab10333



Western Blot analysis of various cells using EGFL4 Polyclonal Antibody

Note

For research use only.