

**Product Name: EGF Rabbit Polyclonal Antibody**  
**Catalog #: APRab10332**



## Summary

<b>Production Name</b>	EGF Rabbit Polyclonal Antibody
<b>Description</b>	Rabbit Polyclonal Antibody
<b>Host</b>	Rabbit
<b>Application</b>	WB,IHC,IF,ELISA
<b>Reactivity</b>	Human,Mouse

## Performance

<b>Conjugation</b>	Unconjugated
<b>Modification</b>	Unmodified
<b>Isotype</b>	IgG
<b>Clonality</b>	Polyclonal
<b>Form</b>	Liquid
<b>Storage</b>	Store at 4°C short term. Aliquot and store at -20°C long term. Avoid freeze/thaw cycles.
<b>Buffer</b>	Liquid in PBS containing 50% glycerol, 0.5% BSA and 0.02% New type preservative N.
<b>Purification</b>	Affinity purification

## Immunogen

<b>Gene Name</b>	EGF
<b>Alternative Names</b>	Pro-epidermal growth factor (EGF) [Cleaved into: Epidermal growth factor (Urogastrone)]
<b>Gene ID</b>	1950.0
<b>SwissProt ID</b>	P01133.Synthetic peptide from human protein at AA range: 1000-1060

## Application

<b>Dilution Ratio</b>	WB 1:500-2000,IHC-p 1:500-200, ELISA 1:10000-20000. IF 1:50-200
<b>Molecular Weight</b>	130kD

## Background

**Product Name: EGF Rabbit Polyclonal Antibody**  
**Catalog #: APRab10332**

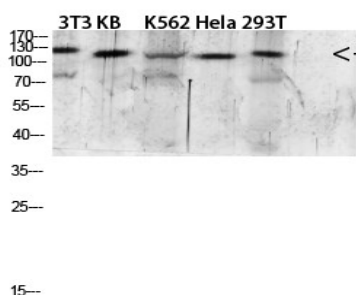


This gene encodes a member of the epidermal growth factor superfamily. The encoded preproprotein is proteolytically processed to generate the 53-amino acid epidermal growth factor peptide. This protein acts a potent mitogenic factor that plays an important role in the growth, proliferation and differentiation of numerous cell types. This protein acts by binding with high affinity to the cell surface receptor, epidermal growth factor receptor. Defects in this gene are the cause of hypomagnesemia type 4. Dysregulation of this gene has been associated with the growth and progression of certain cancers. Alternative splicing results in multiple transcript variants, at least one of which encodes a preproprotein that is proteolytically processed. [provided by RefSeq, Jan 2016],disease:Defects in EGF are the cause of hypomagnesemia type 4 (HOMG4) [MIM:611718]; also known as renal hypomagnesemia normocalciuric. HOMG4 is a disorder characterized by massive renal hypomagnesemia and normal levels of serum calcium and calcium excretion. Clinical features include seizures, mild-to moderate psychomotor retardation, and brisk tendon reflexes.,function:EGF stimulates the growth of various epidermal and epithelial tissues in vivo and in vitro and of some fibroblasts in cell culture. Magnesiotropic hormone that stimulates magnesium reabsorption in the renal distal convoluted tubule via engagement of EGFR and activation of the magnesium channel TRPM6.,online information:Epidermal growth factor entry,similarity:Contains 9 EGF-like domains.,similarity:Contains 9 LDL-receptor class B repeats.,tissue specificity:Expressed in kidney, salivary gland, cerebrum and prostate.,

## Research Area

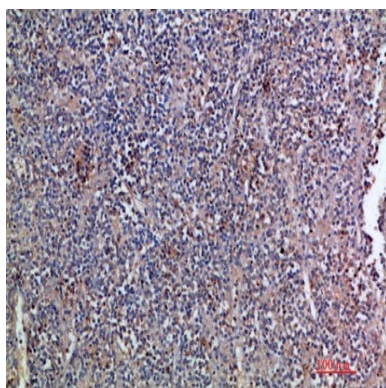
MAPK\_ERK\_Growth;MAPK\_G\_Protein;ErbB\_HER;Cytokine-cytokine receptor interaction;Endocytosis;Focal adhesion;Gap junction;Regulates Actin and Cytoskeleton;Pathways in cancer;Pancreatic cancer;Endometrial cancer;Glioma;Prostate cancer;Melanoma;Bladder cancer;Non-small cell lung cancer;

## Image Data

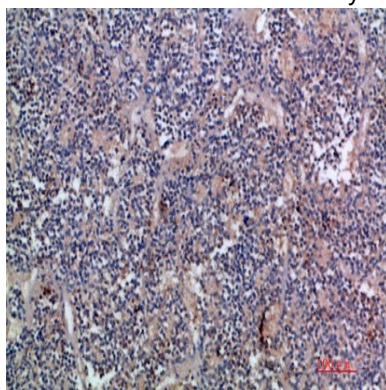


Western blot analysis of 293T mouse-kidney lysate, antibody was diluted at 2000. Secondary antibody was diluted at 1:20000

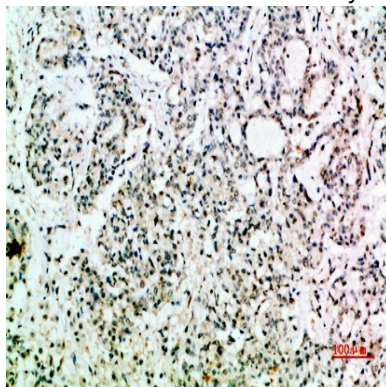
**Product Name: EGF Rabbit Polyclonal Antibody**  
**Catalog #: APRab10332**



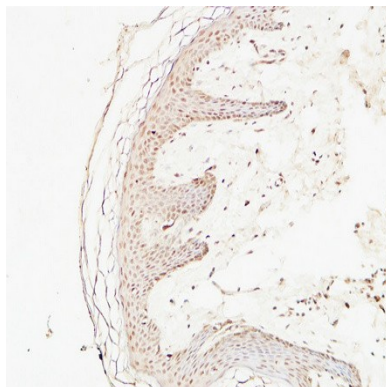
Immunohistochemical analysis of paraffin-embedded human-kidney-cancer, antibody was diluted at 1:200



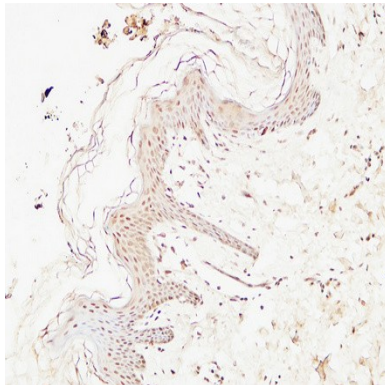
Immunohistochemical analysis of paraffin-embedded human-kidney-cancer, antibody was diluted at 1:200



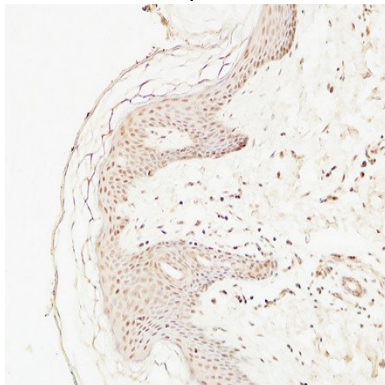
Immunohistochemical analysis of paraffin-embedded human-stomach-cancer, antibody was diluted at 1:200



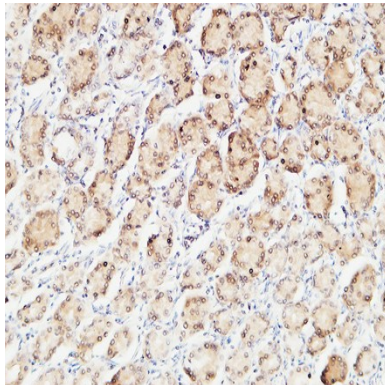
Immunohistochemical analysis of paraffin-embedded Human skin. 1, Antibody was diluted at 1:200 (4°,overnight) . 2, High-pressure and temperature EDTA, pH8.0 was used for antigen retrieval. 3,Secondary antibody was diluted at 1:200 (room temperature, 30min) .



Immunohistochemical analysis of paraffin-embedded Human skin. 1, Antibody was diluted at 1:200 (4°,overnight) . 2, High-pressure and temperature EDTA, pH8.0 was used for antigen retrieval. 3,Secondary antibody was diluted at 1:200 (room temperature, 30min) .



Immunohistochemical analysis of paraffin-embedded Human skin. 1, Antibody was diluted at 1:200 (4°,overnight) . 2, High-pressure and temperature EDTA, pH8.0 was used for antigen retrieval. 3,Secondary antibody was diluted at 1:200 (room temperature, 30min) .



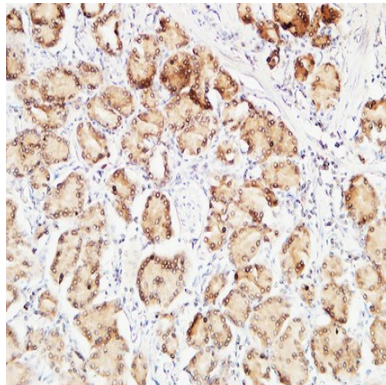
Immunohistochemical analysis of paraffin-embedded Human gastric cancer. 1, Antibody was diluted at 1:100 (4°,overnight) . 2, High-pressure and temperature EDTA, pH8.0 was used for antigen retrieval. 3,Secondary antibody

**Product Name: EGF Rabbit Polyclonal Antibody**  
**Catalog #: APRab10332**

---



was diluted at 1:200 (room temperature, 30min) .



Immunohistochemical analysis of paraffin-embedded Human gastric cancer. 1, Antibody was diluted at 1:100 (4°,overnight) . 2, High-pressure and temperature EDTA, pH8.0 was used for antigen retrieval. 3,Secondary antibody was diluted at 1:200 (room temperature, 30min) .

## **Note**

For research use only.