

Product Name: ECP Rabbit Polyclonal Antibody
Catalog #: APRab10285



Summary

Production Name	ECP Rabbit Polyclonal Antibody
Description	Rabbit Polyclonal Antibody
Host	Rabbit
Application	WB,ELISA
Reactivity	Human,Rat,Mouse

Performance

Conjugation	Unconjugated
Modification	Unmodified
Isotype	IgG
Clonality	Polyclonal
Form	Liquid
Storage	Store at 4°C short term. Aliquot and store at -20°C long term. Avoid freeze/thaw cycles.
Buffer	Liquid in PBS containing 50% glycerol, 0.5% BSA and 0.02% New type preservative N.
Purification	Affinity purification

Immunogen

Gene Name	RNASE3
Alternative Names	RNASE3; ECP; RNS3; Eosinophil cationic protein; ECP; Ribonuclease 3; RNase 3
Gene ID	6037.0
SwissProt ID	P12724.The antiserum was produced against synthesized peptide derived from human ECP. AA range:102-151

Application

Dilution Ratio	WB 1:500 - 1:2000. ELISA: 1:10000
Molecular Weight	18kD

Background

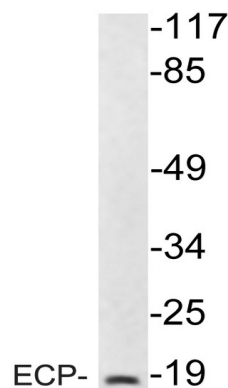
Product Name: ECP Rabbit Polyclonal Antibody
Catalog #: APRab10285

The protein encoded by this gene belongs to the pancreatic ribonuclease family, a subset of the ribonuclease A superfamily. The protein exhibits antimicrobial activity against pathogenic bacteria [provided by RefSeq, Oct 2014],disease:Induces the neurotoxic effect known as the Gordon phenomenon.,function:Cytotoxin and helminthotoxin with low-efficiency ribonuclease activity. Possesses a wide variety of biological activities. Exhibits antibacterial activity.,similarity:Belongs to the pancreatic ribonuclease family.,subcellular location:Matrix of eosinophil's large specific granule.,

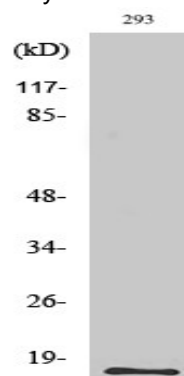
Research Area

Asthma;

Image Data



Western blot analysis of lysate from 293 cells, using ECP antibody.



Western Blot analysis of various cells using ECP Polyclonal Antibody

Note

For research use only.