

**Product Name: EAT-2 Rabbit Polyclonal Antibody**  
**Catalog #: APRab10269**



## Summary

<b>Production Name</b>	EAT-2 Rabbit Polyclonal Antibody
<b>Description</b>	Rabbit Polyclonal Antibody
<b>Host</b>	Rabbit
<b>Application</b>	IHC,ELISA
<b>Reactivity</b>	Human,Rat,Mouse

## Performance

<b>Conjugation</b>	Unconjugated
<b>Modification</b>	Unmodified
<b>Isotype</b>	IgG
<b>Clonality</b>	Polyclonal
<b>Form</b>	Liquid
<b>Storage</b>	Store at 4°C short term. Aliquot and store at -20°C long term. Avoid freeze/thaw cycles.
<b>Buffer</b>	Liquid in PBS containing 50% glycerol, 0.5% BSA and 0.02% New type preservative N.
<b>Purification</b>	Affinity purification

## Immunogen

<b>Gene Name</b>	SH2D1B
<b>Alternative Names</b>	SH2D1B; EAT2; SH2 domain-containing protein 1B; EWS/FLI1-activated transcript 2; EAT-2
<b>Gene ID</b>	117157.0
<b>SwissProt ID</b>	O14796.The antiserum was produced against synthesized peptide derived from human SH2D1B. AA range:71-120

## Application

<b>Dilution Ratio</b>	IHC 1:100-1:300 ELISA: 1:40000
<b>Molecular Weight</b>	

## Background

**Product Name: EAT-2 Rabbit Polyclonal Antibody**  
**Catalog #: APRab10269**

---

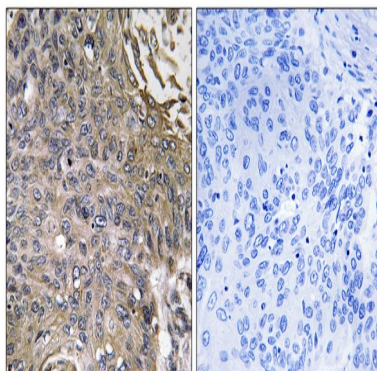


By binding phosphotyrosines through its free SRC (MIM 190090) homology-2 (SH2) domain, EAT2 regulates signal transduction through receptors expressed on the surface of antigen-presenting cells (Morra et al., 2001 [PubMed 11689425]).[supplied by OMIM, Mar 2008],function:Plays a role in controlling signal transduction through at least four receptors, CD84, CD150, CD229 and CD244, expressed on the surface of professional antigen-presenting cells.,similarity:Contains 1 SH2 domain.,subunit:Binds to the phosphorylated receptors CD84, CD150, CD229 and CD244. Does not bind to non-phosphorylated CD150.,

## Research Area

Natural killer cell mediated cytotoxicity;

## Image Data



Immunohistochemistry analysis of paraffin-embedded human lung carcinoma, using SH2D1B Antibody. The picture on the right is blocked with the synthesized peptide.

## Note

For research use only.