

Product Name: Dynein LC 1 Rabbit Polyclonal Antibody
Catalog #: APRab10229



Summary

Production Name	Dynein LC 1 Rabbit Polyclonal Antibody
Description	Rabbit Polyclonal Antibody
Host	Rabbit
Application	WB,IHC,
Reactivity	Human,Mouse

Performance

Conjugation	Unconjugated
Modification	Unmodified
Isotype	IgG
Clonality	Polyclonal
Form	Liquid
Storage	Store at 4°C short term. Aliquot and store at -20°C long term. Avoid freeze/thaw cycles.
Buffer	Liquid in PBS containing 50% glycerol, 0.5% BSA and 0.02% New type preservative N.
Purification	Affinity purification

Immunogen

Gene Name	DNAL1
Alternative Names	DNAL1; C14orf168; Dynein light chain 1; axonemal
Gene ID	83544.0
SwissProt ID	Q4LDG9.The antiserum was produced against synthesized peptide derived from human DNAL1. AA range:121-170

Application

Dilution Ratio	WB 1:500 - 1:2000 IHC 1:100 - 1:300. ELISA: 1:40000..
Molecular Weight	22kD

Background

Product Name: Dynein LC 1 Rabbit Polyclonal Antibody
Catalog #: AP Rab10229

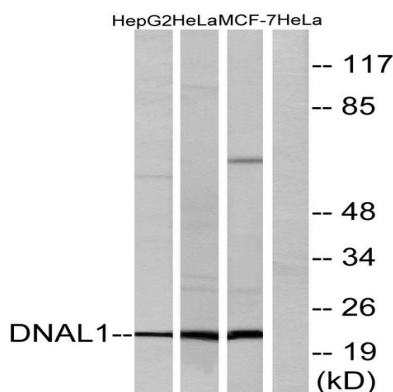


This gene encodes an axonemal dynein light chain which functions as a component of the outer dynein arms complex. This complex acts as the molecular motor that provides the force to move cilia in an ATP-dependent manner. The encoded protein is expressed in tissues with motile cilia or flagella and may be involved in the movement of sperm flagella. Alternate splicing results in multiple transcript variants.[provided by RefSeq, Jan 2011],similarity:Belongs to the dynein light chain LC1-type family.,similarity:Contains 4 LRR (leucine-rich) repeats.,subunit:Interacts with DNAH5.,tissue specificity:Expressed in tissues carrying motile cilia such as testis.,

Research Area

Huntington's disease;

Image Data

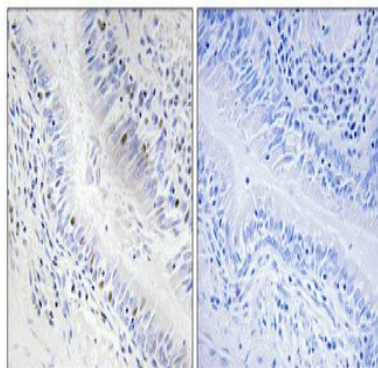


Western blot analysis of lysates from HeLa, HepG2, and MCF-7 cells, using DNAL1 Antibody. The lane on the right is blocked with the synthesized peptide.

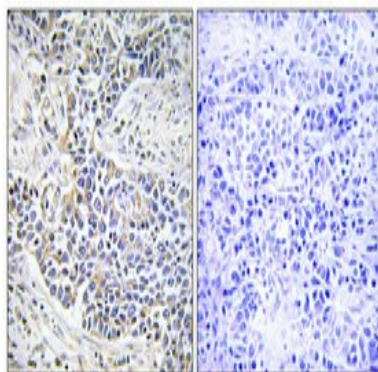


Western Blot analysis of various cells using Dynein LC 1 Polyclonal Antibody diluted at 1: 500

Product Name: Dynein LC 1 Rabbit Polyclonal Antibody
Catalog #: APRab10229



Immunohistochemical analysis of paraffin-embedded Human lung cancer. Antibody was diluted at 1:100 (4°,overnight) . High-pressure and temperature Tris-EDTA,pH8.0 was used for antigen retrieval. Negative contrl (right) obtaned from antibody was pre-absorbed by immunogen peptide.



Immunohistochemical analysis of paraffin-embedded Human lung cancer. Antibody was diluted at 1:100 (4°,overnight) . High-pressure and temperature Tris-EDTA,pH8.0 was used for antigen retrieval. Negative contrl (right) obtaned from antibody was pre-absorbed by immunogen peptide.

Note

For research use only.