

Product Name: DNA pol β Rabbit Polyclonal Antibody
Catalog #: APRab10054



Summary

Production Name	DNA pol β Rabbit Polyclonal Antibody
Description	Rabbit Polyclonal Antibody
Host	Rabbit
Application	IHC, WB,
Reactivity	Human, Mouse, Rat

Performance

Conjugation	Unconjugated
Modification	Unmodified
Isotype	IgG
Clonality	Polyclonal
Form	Liquid
Storage	Store at 4°C short term. Aliquot and store at -20°C long term. Avoid freeze/thaw cycles.
Buffer	Liquid in PBS containing 50% glycerol, 0.5% BSA and 0.02% New type preservative N.
Purification	Affinity purification

Immunogen

Gene Name	POLB
Alternative Names	POLB; DNA polymerase beta
Gene ID	5423.0
SwissProt ID	P06746. The antiserum was produced against synthesized peptide derived from human DNA Polymerase beta. AA range: 286-335

Application

Dilution Ratio	WB 1:500 - 1:2000. IHC 1:100 - 1:300. ELISA: 1:10000..
Molecular Weight	38kD

Background

Product Name: DNA pol β Rabbit Polyclonal Antibody
Catalog #: APRab10054

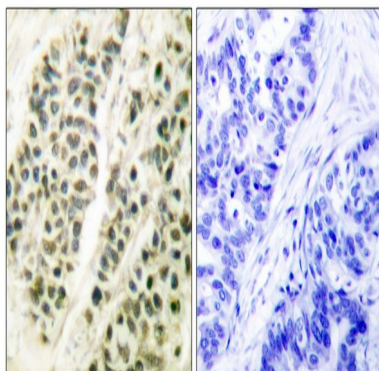


The protein encoded by this gene is a DNA polymerase involved in base excision and repair, also called gap-filling DNA synthesis. The encoded protein, acting as a monomer, is normally found in the cytoplasm, but it translocates to the nucleus upon DNA damage. Several transcript variants of this gene exist, but the full-length nature of only one has been described to date. [provided by RefSeq, Sep 2011],catalytic activity:Deoxynucleoside triphosphate + DNA(n) = diphosphate + DNA(n+1).,cofactor:Binds 2 magnesium ions per subunit.,domain:Residues 239-252 form a flexible loop which appears to affect the polymerase fidelity.,function:Repair polymerase. Conducts "gap-filling" DNA synthesis in a stepwise distributive fashion rather than in a processive fashion as for other DNA polymerases. Has a 5'-deoxyribose-5-phosphate lyase (dRP lyase) activity.,PTM:Methylation by PRMT6 stimulates the polymerase activity by enhancing DNA binding and processivity.,similarity:Belongs to the DNA polymerase type-X family.,subunit:Monomer.,

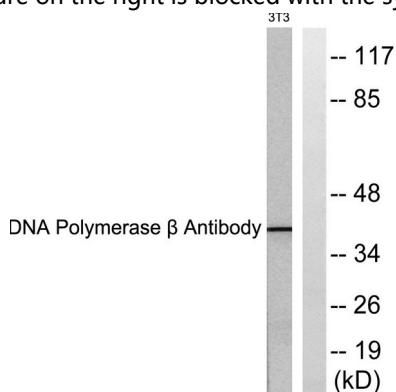
Research Area

Base excision repair;

Image Data

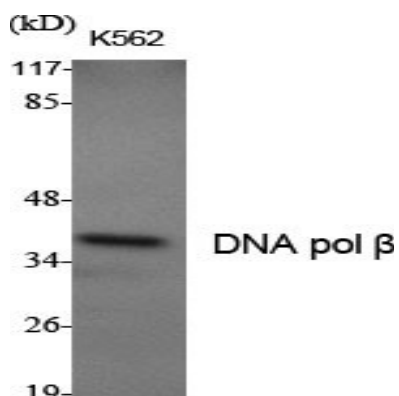


Immunohistochemistry analysis of paraffin-embedded human breast carcinoma tissue, using DNA Polymerase beta Antibody. The picture on the right is blocked with the synthesized peptide.

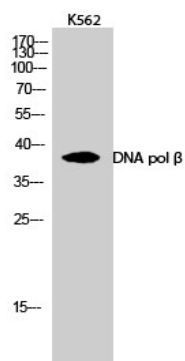


Western blot analysis of lysates from NIH/3T3 cells, using DNA Polymerase beta Antibody. The lane on the right is blocked with the synthesized peptide.

Product Name: DNA pol β Rabbit Polyclonal Antibody
Catalog #: APRab10054



Western Blot analysis of various cells using DNA pol β Polyclonal Antibody



Western Blot analysis of K562 cells using DNA pol β Polyclonal Antibody

Note

For research use only.