

**Product Name: DIRC1 Rabbit Polyclonal Antibody**  
**Catalog #: APRab09991**



## Summary

<b>Production Name</b>	DIRC1 Rabbit Polyclonal Antibody
<b>Description</b>	Rabbit Polyclonal Antibody
<b>Host</b>	Rabbit
<b>Application</b>	WB
<b>Reactivity</b>	Human,Rat,Mouse

## Performance

<b>Conjugation</b>	Unconjugated
<b>Modification</b>	Unmodified
<b>Isotype</b>	IgG
<b>Clonality</b>	Polyclonal
<b>Form</b>	Liquid
<b>Storage</b>	Store at 4°C short term. Aliquot and store at -20°C long term. Avoid freeze/thaw cycles.
<b>Buffer</b>	Liquid in PBS containing 50% glycerol, and 0.02% New type preservative N.
<b>Purification</b>	Affinity purification

## Immunogen

<b>Gene Name</b>	DIRC1
<b>Alternative Names</b>	
<b>Gene ID</b>	116093.0
<b>SwissProt ID</b>	Q969H9.Synthesized peptide derived from human protein . at AA range: 20-100

## Application

<b>Dilution Ratio</b>	WB 1:500-2000 ELISA 1:5000-20000
<b>Molecular Weight</b>	11kD

## Background

This gene consists of two exons and encodes a 104aa protein. Disruption of this gene by translocation t(2;3)(q33;q21) is associated with familial clear cell renal cancer. [provided by RefSeq, Sep 2010],disease:A chromosomal aberration involving

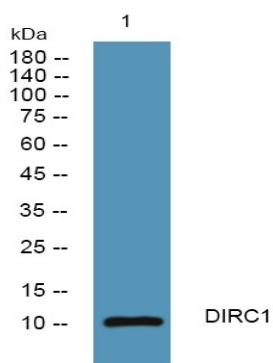
**Product Name: DIRC1 Rabbit Polyclonal Antibody**  
**Catalog #: APRab09991**



DIRC1 is found in familial renal cell carcinoma 1-related translocation t(2;3)(q33;q21) (RCC1), tissue specificity: Expressed at low steady-state level in adult placenta, testis, ovary, prostate, fetal kidney, spleen and skeletal muscle.

## Research Area

## Image Data



Western blot analysis of lysates from HCT116 cells, primary antibody was diluted at 1:1000, 4° over night

## Note

For research use only.