

Summary

Production Name	DCL-1 Rabbit Polyclonal Antibody
Description	Rabbit Polyclonal Antibody
Host	Rabbit
Application	WB,IHC,ELISA
Reactivity	Human,Mouse,Rat

Performance

Conjugation	Unconjugated
Modification	Unmodified
Isotype	IgG
Clonality	Polyclonal
Form	Liquid
Storage	Store at 4°C short term. Aliquot and store at -20°C long term. Avoid freeze/thaw cycles.
Buffer	Liquid in PBS containing 50% glycerol, 0.5% BSA and 0.02% New type preservative N.
Purification	Affinity purification

Immunogen

Gene Name	CD302
Alternative Names	CD302; CLEC13A; DCL1; KIAA0022; CD302 antigen; C-type lectin BIMLEC; C-type lectin domain family 13 member A; DEC205-associated C-type lectin 1; Type I transmembrane C-type lectin receptor DCL-1; CD antigen CD302
Gene ID	9936.0
SwissProt ID	Q8IX05.The antiserum was produced against synthesized peptide derived from human CD302. AA range:51-100

Application

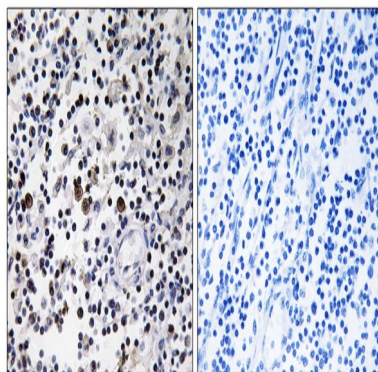
Dilution Ratio	WB 1:500 - 1:2000. IHC 1:100 - 1:300. ELISA: 1:40000..
Molecular Weight	26kD

Background

CD302 is a C-type lectin receptor involved in cell adhesion and migration, as well as endocytosis and phagocytosis (Kato et al., 2007 [PubMed 17947679]).[supplied by OMIM, Aug 2008],function:Acts as an endocytic receptor to direct captured antigens from the extracellular space to a specialized antigen-processing compartment (By similarity). Causes reduced proliferation of B-lymphocytes.,miscellaneous:Isoform 2 and isoform 3 are produced in HRS cells by a transcriptional control mechanism which cotranscribe an mRNA containing LY75 and CD302 prior to generating the intergenically spliced mRNA to produce LY75/CD302 fusion proteins.,online information:DEC-205,PTM:N-glycosylated.,similarity:Contains 1 C-type lectin domain.,similarity:Contains 1 fibronectin type-II domain.,similarity:Contains 1 ricin B-type lectin domain.,similarity:Contains 10 C-type lectin domains.,tissue specificity:Expressed in myeloid and B lymphoid cell lines. Isoform 2 and isoform 3 are expressed in malignant Hodgkin's lymphoma cells called Hodgkin's and Reed-Sternberg (HRS) cells.,tissue specificity:Expressed in spleen, thymus, colon and peripheral blood lymphocytes. Detected in myeloid and B lymphoid cell lines. Isoform 2 and isoform 3 are expressed in malignant Hodgkin's lymphoma cells called Hodgkin's and Reed-Sternberg (HRS) cells.,

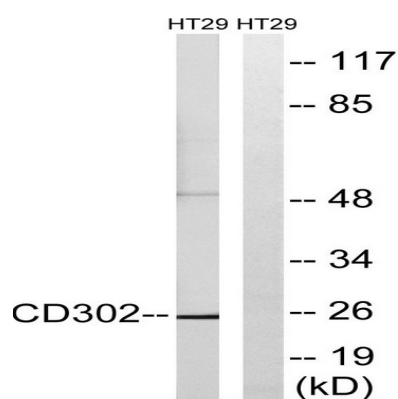
Research Area

Image Data



Immunohistochemistry analysis of paraffin-embedded human lymph node tissue, using CD302 Antibody. The picture on the right is blocked with the synthesized peptide.

Product Name: DCL-1 Rabbit Polyclonal Antibody
Catalog #: APRab09838



Western blot analysis of lysates from HT-29 cells, using CD302 Antibody. The lane on the right is blocked with the synthesized peptide.

Note

For research use only.