

Product Name: Dbf4 Rabbit Polyclonal Antibody
Catalog #: APRab09812



Summary

Production Name	Dbf4 Rabbit Polyclonal Antibody
Description	Rabbit Polyclonal Antibody
Host	Rabbit
Application	WB,IHC,ELISA
Reactivity	Human,Mouse,Monkey

Performance

Conjugation	Unconjugated
Modification	Unmodified
Isotype	IgG
Clonality	Polyclonal
Form	Liquid
Storage	Store at 4°C short term. Aliquot and store at -20°C long term. Avoid freeze/thaw cycles.
Buffer	Liquid in PBS containing 50% glycerol, 0.5% BSA and 0.02% New type preservative N.
Purification	Affinity purification

Immunogen

Gene Name	DBF4
Alternative Names	DBF4; ASK; DBF4A; ZDBF1; Protein DBF4 homolog A; Activator of S phase kinase; Chiffon homolog A; DBF4-type zinc finger-containing protein 1
Gene ID	10926.0
SwissProt ID	Q9UBU7.The antiserum was produced against synthesized peptide derived from human DBF4. AA range:10-59

Application

Dilution Ratio	WB 1:500 - 1:2000. IHC 1:100 - 1:300. ELISA: 1:10000..
Molecular Weight	77kD

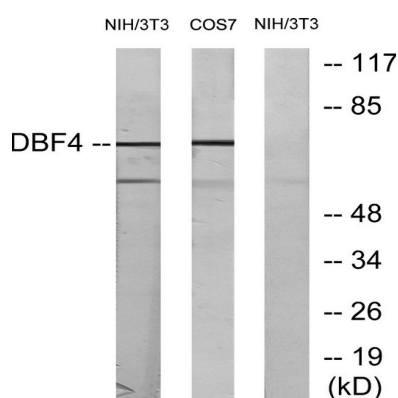
Background

function:Regulatory subunit for CDC7 which activates its kinase activity thereby playing a central role in DNA replication and cell proliferation. Required for progression of S phase. The complex CDC7-DBF4A selectively phosphorylates MCM2 subunit at 'Ser-40' and 'Ser-53' and then is involved in regulating the initiation of DNA replication during cell cycle.,induction:Induced in G1 phase at low level, increased during G1-S phase and remain high during S and G2-M phase.,PTM:Phosphorylated upon DNA damage, probably by ATM or ATR.,similarity:Contains 1 DBF4-type zinc finger.,similarity:Contains 2 BRCT domains.,subunit:Forms a complex with CDC7. Note that CDC7 forms distinct complex either with DBF4A or DBF4B. Such complexes are stable upon replication stress. Interacts with MEN1, MCM2, ORC2L, ORC4L and ORC6L.,tissue specificity:Highly expressed in testis and thymus. Expressed also in most cancer cells lines.,function:Regulatory subunit for CDC7 which activates its kinase activity thereby playing a central role in DNA replication and cell proliferation. Required for progression of S phase. The complex CDC7-DBF4A selectively phosphorylates MCM2 subunit at 'Ser-40' and 'Ser-53' and then is involved in regulating the initiation of DNA replication during cell cycle.,induction:Induced in G1 phase at low level, increased during G1-S phase and remain high during S and G2-M phase.,PTM:Phosphorylated upon DNA damage, probably by ATM or ATR.,similarity:Contains 1 DBF4-type zinc finger.,similarity:Contains 2 BRCT domains.,subunit:Forms a complex with CDC7. Note that CDC7 forms distinct complex either with DBF4A or DBF4B. Such complexes are stable upon replication stress. Interacts with MEN1, MCM2, ORC2L, ORC4L and ORC6L.,tissue specificity:Highly expressed in testis and thymus. Expressed also in most cancer cells lines.,

Research Area

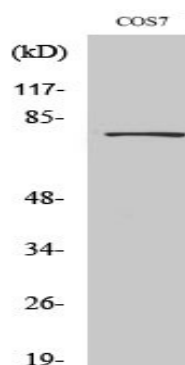
Cell_Cycle_G1S;Cell_Cycle_G2M_DNA;

Image Data

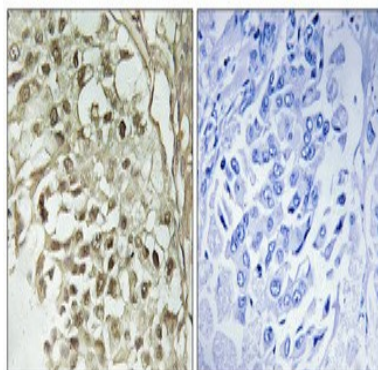


Western blot analysis of lysates from NIH/3T3 cells, treated with H₂O₂ 100uM 30', COS7 treated with PMA 125ng/ml 30', using DBF4 Antibody. The lane on the right is blocked with the synthesized peptide.

Product Name: Dbf4 Rabbit Polyclonal Antibody
Catalog #: APRab09812



Western Blot analysis of various cells using Dbf4 Polyclonal Antibody cells nucleus extracted by Minute TM Cytoplasmic and Nuclear Fractionation kit (SC-003, Invent biotech, MN, USA) .



Immunohistochemical analysis of paraffin-embedded Human breast cancer. Antibody was diluted at 1:100 (4°, overnight) . High-pressure and temperature Tris-EDTA, pH 8.0 was used for antigen retrieval. Negative control (right) obtained from antibody was pre-absorbed by immunogen peptide.

Note

For research use only.