

**Product Name: Cytokeratin 14 Rabbit Polyclonal Antibody**  
**Catalog #: APRab09726**

---

## Summary

|                        |   |
|------------------------|---|
| <b>Production Name</b> | Cytokeratin 14 Rabbit Polyclonal Antibody |
| <b>Description</b>     | Rabbit Polyclonal Antibody                |
| <b>Host</b>            | Rabbit                                    |
| <b>Application</b>     | WB,IHC,IF,ELISA                           |
| <b>Reactivity</b>      | Human,Mouse,Rat                           |

## Performance

|                     |  |
|---------------------|--|
| <b>Conjugation</b>  | Unconjugated   |
| <b>Modification</b> | Unmodified   |
| <b>Isotype</b>      | IgG  |
| <b>Clonality</b>    | Polyclonal   |
| <b>Form</b>         | Liquid   |
| <b>Storage</b>      | Store at 4°C short term. Aliquot and store at -20°C long term. Avoid freeze/thaw cycles. |
| <b>Buffer</b>       | Liquid in PBS containing 50% glycerol, 0.5% BSA and 0.02% New type preservative N.       |
| <b>Purification</b> | Affinity purification  |

## Immunogen

|                          |   |
|--------------------------|---|
| <b>Gene Name</b>         | KRT14   |
| <b>Alternative Names</b> | KRT14; Keratin, type I cytoskeletal 14; Cytokeratin-14; CK-14; Keratin-14; K14  |
| <b>Gene ID</b>           | 3861.0  |
| <b>SwissProt ID</b>      | P02533.The antiserum was produced against synthesized peptide derived from the C-terminal region of human KRT14. AA range:421-470 |

## Application

|                         |  |
|-------------------------|--|
| <b>Dilution Ratio</b>   | WB 1:500 - 1:2000. IHC-p: 1:100-300 ELISA: 1:20000.. IF 1:50-200 |
| <b>Molecular Weight</b> | 53kD   |

**Product Name: Cytokeratin 14 Rabbit Polyclonal Antibody**  
**Catalog #: APRab09726**

---

## Background

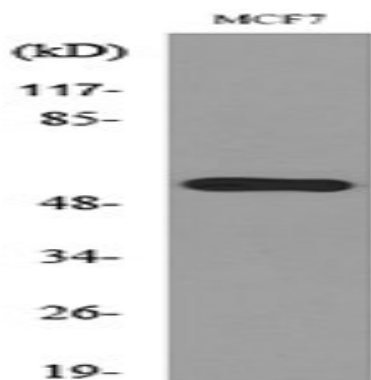
This gene encodes a member of the keratin family, the most diverse group of intermediate filaments. This gene product, a type I keratin, is usually found as a heterotetramer with two keratin 5 molecules, a type II keratin. Together they form the cytoskeleton of epithelial cells. Mutations in the genes for these keratins are associated with epidermolysis bullosa simplex. At least one pseudogene has been identified at 17p12-p11. [provided by RefSeq, Jul 2008],disease:Defects in KRT14 are a cause of epidermolysis bullosa simplex Dowling-Meara type (DM-EBS) [MIM:131760]. DM-EBS is a severe form of intraepidermal epidermolysis bullosa characterized by generalized herpetiform blistering, milia formation, dystrophic nails, and mucous membrane involvement.,disease:Defects in KRT14 are a cause of epidermolysis bullosa simplex Koebner type (K-EBS) [MIM:131900]. K-EBS is a form of intraepidermal epidermolysis bullosa characterized by generalized skin blistering. The phenotype is not fundamentally distinct from the Dowling-Meara type, although it is less severe.,disease:Defects in KRT14 are a cause of epidermolysis bullosa simplex Weber-Cockayne type (WC-EBS) [MIM:131800]. WC-EBS is a form of intraepidermal epidermolysis bullosa characterized by blistering limited to palmar and plantar areas of the skin.,disease:Defects in KRT14 are the cause of dermatopathia pigmentosa reticularis (DPR) [MIM:125595]. DPR is a rare ectodermal dysplasia characterized by lifelong persistent reticulate hyperpigmentation, noncicatricial alopecia, and nail dystrophy.,disease:Defects in KRT14 are the cause of epidermolysis bullosa simplex autosomal recessive (AREBS) [MIM:601001]. AREBS is an intraepidermal epidermolysis bullosa characterized by localized blistering on the dorsal, lateral and plantar surfaces of the feet.,disease:Defects in KRT14 are the cause of Naegeli-Franceschetti-Jadassohn syndrome (NFJS) [MIM:161000]; also known as Naegeli syndrome. NFJS is a rare autosomal dominant form of ectodermal dysplasia. The cardinal features are absence of dermatoglyphics (fingerprints), reticular cutaneous hyperpigmentation (starting at about the age of 2 years without a preceding inflammatory stage), palmoplantar keratoderma, hypohidrosis with diminished sweat gland function and discomfort provoked by heat, nail dystrophy, and tooth enamel defects.,function:The nonhelical tail domain is involved in promoting KRT5-KRT14 filaments to self-organize into large bundles and enhances the mechanical properties involved in resilience of keratin intermediate filaments in vitro.,miscellaneous:There are two types of cytoskeletal and microfibrillar keratin: I (acidic; 40-55 kDa) and II (neutral to basic; 56-70 kDa),similarity:Belongs to the intermediate filament family.,subcellular location:Expressed in both as a filamentous pattern.,subunit:Heterotetramer of two type I and two type II keratins. keratin-14 associates with keratin-5. Interacts with TRADD and with keratin filaments. Associates with other type I keratins.,tissue specificity:Detected in the basal layer, lowered within the more apically located layers specifically in the stratum spinosum, stratum granulosum but is not detected in stratum corneum. Strongly expressed in the outer root sheath of anagen follicles but not in the germinative matrix, inner root sheath or hair. Found in keratinocytes surrounding the club hair during telogen.,

## Research Area

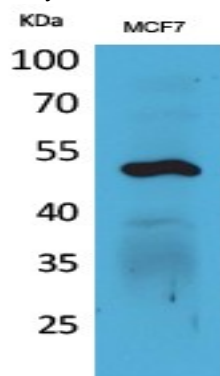
## Image Data

---

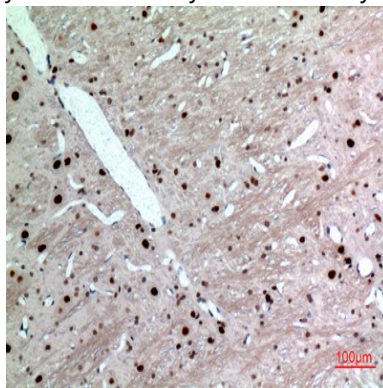
**Product Name: Cytokeratin 14 Rabbit Polyclonal Antibody**  
**Catalog #: APRab09726**



Western blot analysis of lysate from MCF7 cells, using KRT14 Antibody.



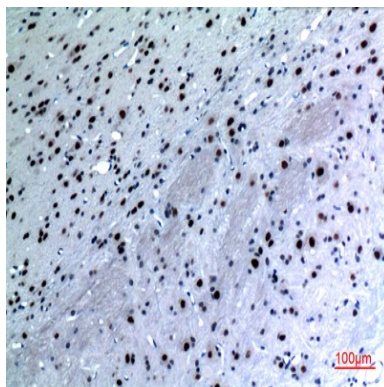
Western Blot analysis of MCF7 cells using Cytokeratin 14 Polyclonal Antibody.. Secondary antibody was diluted at 1:20000



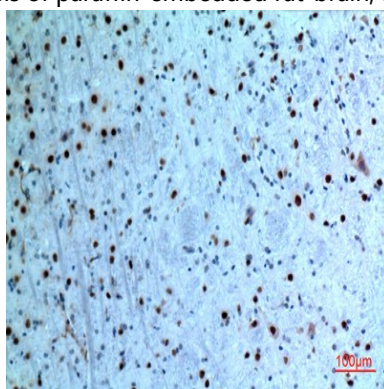
Immunohistochemical analysis of paraffin-embedded rat-brain, antibody was diluted at 1:100

**Product Name: Cytokeratin 14 Rabbit Polyclonal  
Antibody**  
**Catalog #: APRab09726**

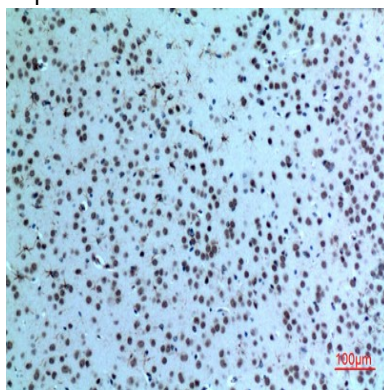
---



Immunohistochemical analysis of paraffin-embedded rat-brain, antibody was diluted at 1:100



Immunohistochemical analysis of paraffin-embedded mouse-brain, antibody was diluted at 1:100



Immunohistochemical analysis of paraffin-embedded mouse-brain, antibody was diluted at 1:100

## **Note**

For research use only.