

Product Name: Cytochrome c1 Rabbit Polyclonal Antibody
Catalog #: APRab09710

Summary

Production Name	Cytochrome c1 Rabbit Polyclonal Antibody
Description	Rabbit Polyclonal Antibody
Host	Rabbit
Application	WB,ELISA
Reactivity	Human,Mouse

Performance

Conjugation	Unconjugated
Modification	Unmodified
Isotype	IgG
Clonality	Polyclonal
Form	Liquid
Storage	Store at 4°C short term. Aliquot and store at -20°C long term. Avoid freeze/thaw cycles.
Buffer	Liquid in PBS containing 50% glycerol, 0.5% BSA and 0.02% New type preservative N.
Purification	Affinity purification

Immunogen

Gene Name	CYC1
Alternative Names	CYC1; Cytochrome c1; heme protein, mitochondrial; Complex III subunit 4; Complex III subunit IV; Cytochrome b-c1 complex subunit 4; Ubiquinol-cytochrome-c reductase complex cytochrome c1 subunit; Cytochrome c-1
Gene ID	1537.0
SwissProt ID	P08574.The antiserum was produced against synthesized peptide derived from human CYC1. AA range:132-181

Application

Dilution Ratio	WB 1:500-2000; ELISA 1:5000-20000
Molecular Weight	35kD

Product Name: Cytochrome c1 Rabbit Polyclonal Antibody
Catalog #: APRab09710



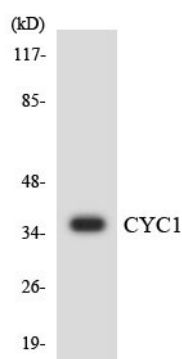
Background

This gene encodes a subunit of the cytochrome bc1 complex, which plays an important role in the mitochondrial respiratory chain by transferring electrons from the Rieske iron-sulfur protein to cytochrome c. Mutations in this gene may cause mitochondrial complex III deficiency, nuclear type 6. [provided by RefSeq, Dec 2013],function:This is the heme-containing component of the cytochrome b-c1 complex, which accepts electrons from Rieske protein and transfers electrons to cytochrome c in the mitochondrial respiratory chain.,PTM: Binds 1 heme group per subunit.,similarity: Belongs to the cytochrome c family.,subunit: The bc1 complex contains 11 subunits: 3 respiratory subunits (cytochrome b, cytochrome c1 and Rieske/UQCRC1), 2 core proteins (UQCRC1/QCR1 and UQCRC2/QCR2) and 6 low-molecular weight proteins (UQCRH/QCR6, UQCRB/QCR7, UQCRC3/QCR8, UQCR10/QCR9, UQCR11/QCR10 and a cleavage product of Rieske/UQCRC1),.

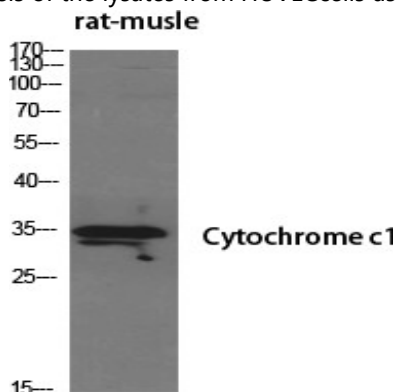
Research Area

Oxidative phosphorylation; Cardiac muscle contraction; Alzheimer's disease; Parkinson's disease; Huntington's disease;

Image Data



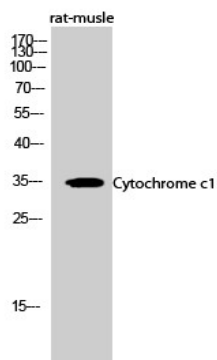
Western blot analysis of the lysates from HUVEC cells using CYC1 antibody.



Product Name: Cytochrome c1 Rabbit Polyclonal Antibody
Catalog #: APRab09710



Western Blot analysis of various cells using Cytochrome c1 Polyclonal Antibody diluted at 1: 500



Western Blot analysis of rat-muscle cells using Cytochrome c1 Polyclonal Antibody diluted at 1: 500

Note

For research use only.