

Product Name: Cystatin 8 Rabbit Polyclonal Antibody
Catalog #: APRab09689



Summary

Production Name	Cystatin 8 Rabbit Polyclonal Antibody
Description	Rabbit Polyclonal Antibody
Host	Rabbit
Application	IHC,ELISA
Reactivity	Human,Mouse

Performance

Conjugation	Unconjugated
Modification	Unmodified
Isotype	IgG
Clonality	Polyclonal
Form	Liquid
Storage	Store at 4°C short term. Aliquot and store at -20°C long term. Avoid freeze/thaw cycles.
Buffer	Liquid in PBS containing 50% glycerol, 0.5% BSA and 0.02% New type preservative N.
Purification	Affinity purification

Immunogen

Gene Name	CST8
Alternative Names	CST8; CRES; Cystatin-8; Cystatin-related epididymal spermatogenic protein
Gene ID	10047.0
SwissProt ID	O60676.The antiserum was produced against synthesized peptide derived from human CST8. AA range:31-80

Application

Dilution Ratio	IHC 1:100-1:300 ELISA: 1:40000
Molecular Weight	

Background

The cystatin superfamily encompasses proteins that contain multiple cystatin-like sequences. Some of the members are

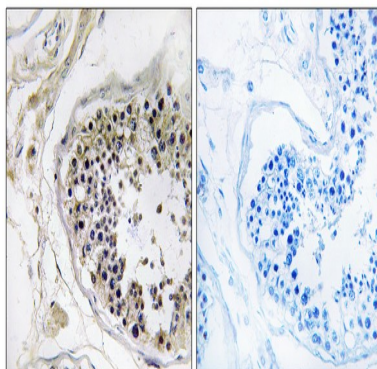
Product Name: Cystatin 8 Rabbit Polyclonal Antibody
Catalog #: APRab09689



active cysteine protease inhibitors, while others have lost or perhaps never acquired this inhibitory activity. There are three inhibitory families in the superfamily, including the type 1 cystatins (stefins), type 2 cystatins and the kininogens. The type 2 cystatin proteins are a class of cysteine proteinase inhibitors found in a variety of human fluids and secretions. The cystatin locus on chromosome 20 contains the majority of the type 2 cystatin genes and pseudogenes. This gene is located in the cystatin locus and encodes a protein similar to type 2 cystatins. The encoded protein exhibits highly tissue-specific expression in the reproductive tract, suggesting implicit roles in reproduction. Alternative splicing results in multiple transcript variants. [provided by RefSeq, Aug 2013],function:Performs a specialized role during sperm development and maturation.,similarity:Belongs to the cystatin family.,tissue specificity:Proximal caput region of the epididymis. Lower expression in the testis. Within the testis it is localized to the elongating spermatids, whereas within the epididymis it is exclusively synthesized by the proximal caput epithelium.,

Research Area

Image Data



Immunohistochemistry analysis of paraffin-embedded human testis tissue, using CST8 Antibody. The picture on the right is blocked with the synthesized peptide.

Note

For research use only.