

Product Name: Cystatin 11 Rabbit Polyclonal Antibody
Catalog #: APRab09688



Summary

Production Name	Cystatin 11 Rabbit Polyclonal Antibody
Description	Rabbit Polyclonal Antibody
Host	Rabbit
Application	WB,ELISA
Reactivity	Human,Rat,Mouse

Performance

Conjugation	Unconjugated
Modification	Unmodified
Isotype	IgG
Clonality	Polyclonal
Form	Liquid
Storage	Store at 4°C short term. Aliquot and store at -20°C long term. Avoid freeze/thaw cycles.
Buffer	Liquid in PBS containing 50% glycerol, 0.5% BSA and 0.02% New type preservative N.
Purification	Affinity purification

Immunogen

Gene Name	CST11
Alternative Names	CST11; CST8L; Cystatin-11
Gene ID	140880.0
SwissProt ID	Q9H112.The antiserum was produced against synthesized peptide derived from human CST11. AA range:81-130

Application

Dilution Ratio	WB 1:500 - 1:2000. ELISA: 1:40000.
Molecular Weight	17kD

Background

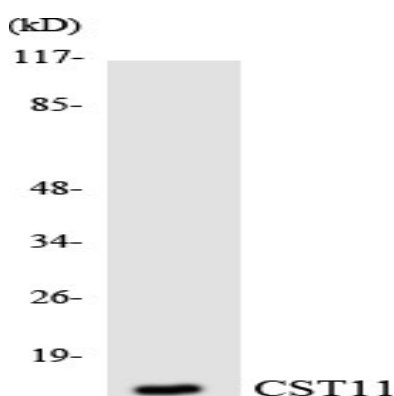
Product Name: Cystatin 11 Rabbit Polyclonal Antibody
Catalog #: APRab09688



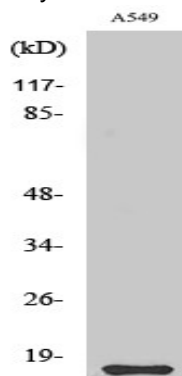
The cystatin superfamily encompasses proteins that contain multiple cystatin-like sequences. Some of the members are active cysteine protease inhibitors, while others have lost or perhaps never acquired this inhibitory activity. There are three inhibitory families in the superfamily, including the type 1 cystatins (stefins), type 2 cystatins and the kininogens. The type 2 cystatin proteins are a class of cysteine proteinase inhibitors found in a variety of human fluids and secretions. The cystatin locus on chromosome 20 contains the majority of the type 2 cystatin genes and pseudogenes. This gene is located in the cystatin locus and encodes an epididymal-specific protein shown to have antimicrobial activity against E. coli. Alternative splicing yields two variants encoding distinct isoforms. [provided by RefSeq, Sep 2014],function:Has antibacterial activity against the Gram-negative bacteria E.coli. May play a role in sperm maturation and fertilization.,similarity:Belongs to the cystatin family.,subcellular location:Nuclear and cytoplasmic in the epididymis. Localized to the postacrosomal and tail regions of sperm. Probably localized to the outer surface of sperm.,tissue specificity:Detected in the epithelium and lumen of the epididymis, and in sperm (at protein level),

Research Area

Image Data



Western blot analysis of the lysates from Jurkat cells using CST11 antibody.



Western Blot analysis of various cells using Cystatin 11 Polyclonal Antibody

Product Name: Cystatin 11 Rabbit Polyclonal Antibody
Catalog #: APRab09688



Note

For research use only.