

Summary

Production Name	CyPA Rabbit Polyclonal Antibody
Description	Rabbit Polyclonal Antibody
Host	Rabbit
Application	WB,IHC,IF,ELISA
Reactivity	Human,Mouse,Rat

Performance

Conjugation	Unconjugated
Modification	Unmodified
Isotype	IgG
Clonality	Polyclonal
Form	Liquid
Storage	Store at 4°C short term. Aliquot and store at -20°C long term. Avoid freeze/thaw cycles.
Buffer	Liquid in PBS containing 50% glycerol, 0.5% BSA and 0.02% New type preservative N.
Purification	Affinity purification

Immunogen

Gene Name	PPIA
Alternative Names	PPIA; CYPA; Peptidyl-prolyl cis-trans isomerase A; PPlase A; Cyclophilin A; Cyclosporin A-binding protein; Rotamase A
Gene ID	5478.0
SwissProt ID	P62937.The antiserum was produced against synthesized peptide derived from the Internal region of human PPIA. AA range:51-100

Application

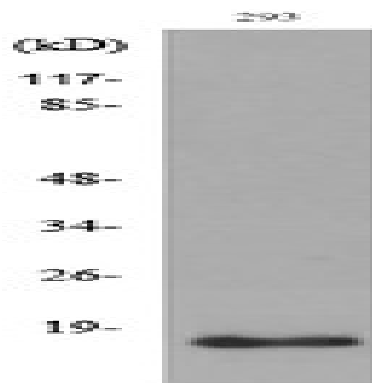
Dilution Ratio	WB 1:500 - 1:2000. IHC-p: 1:100-300 ELISA: 1:20000.. IF 1:50-200
Molecular Weight	18kD

Background

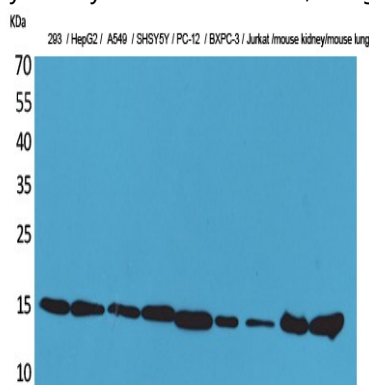
This gene encodes a member of the peptidyl-prolyl cis-trans isomerase (PPIase) family. PPIases catalyze the cis-trans isomerization of proline imidic peptide bonds in oligopeptides and accelerate the folding of proteins. The encoded protein is a cyclosporin binding-protein and may play a role in cyclosporin A-mediated immunosuppression. The protein can also interact with several HIV proteins, including p55 gag, Vpr, and capsid protein, and has been shown to be necessary for the formation of infectious HIV virions. Multiple pseudogenes that map to different chromosomes have been reported. [provided by RefSeq, Jul 2008],catalytic activity:Peptidylproline (omega=180) = peptidylproline (omega=0).,enzyme regulation:Binds cyclosporin A (CsA). CsA mediates some of its effects via an inhibitory action on PPIase.,function:PPIases accelerate the folding of proteins.,function:PPIases accelerate the folding of proteins. It catalyzes the cis-trans isomerization of proline imidic peptide bonds in oligopeptides.,online information:Cyclophilin entry,similarity:Belongs to the cyclophilin-type PPIase family.,similarity:Belongs to the cyclophilin-type PPIase family. PPIase A subfamily.,similarity:Contains 1 PPIase cyclophilin-type domain.,subunit:Interacts with HIV-1 Capsid protein.,

Research Area

Image Data



Western blot analysis of lysate from 293 cells, using PPIA Antibody.

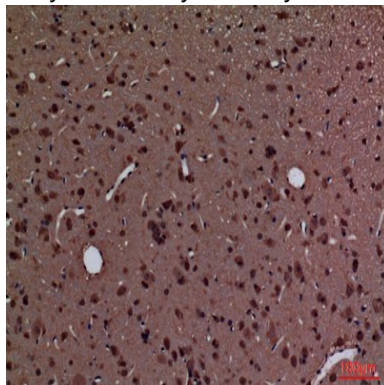


Western Blot analysis of 293, HepG2, A549, SHSY5Y, PC-12, BXP-3, Jurkat, mouse kidney, mouse lung cells using CyPA

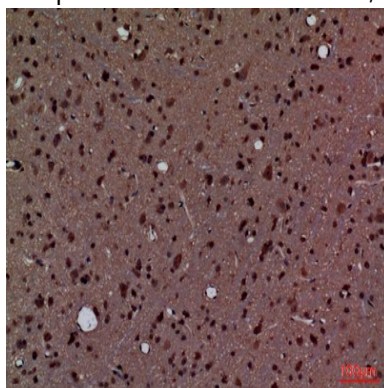
Product Name: CyPA Rabbit Polyclonal Antibody
Catalog #: APRab09680



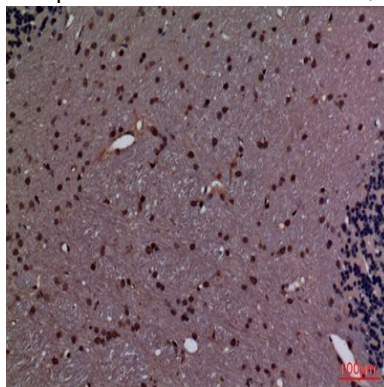
Polyclonal Antibody.. Secondary antibody was diluted at 1:20000



Immunohistochemical analysis of paraffin-embedded rat-brain, antibody was diluted at 1:100

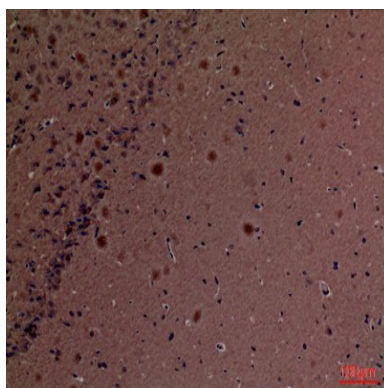


Immunohistochemical analysis of paraffin-embedded rat-brain, antibody was diluted at 1:100

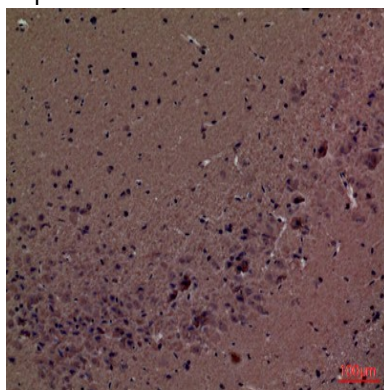


Immunohistochemical analysis of paraffin-embedded rat-brain, antibody was diluted at 1:100

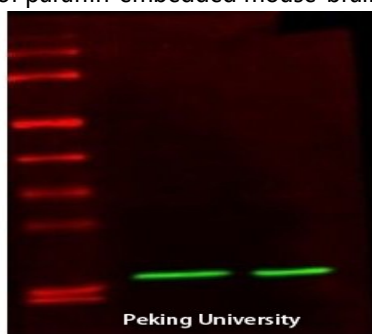
Product Name: CyPA Rabbit Polyclonal Antibody
Catalog #: APRab09680



Immunohistochemical analysis of paraffin-embedded mouse-brain, antibody was diluted at 1:100



Immunohistochemical analysis of paraffin-embedded mouse-brain, antibody was diluted at 1:100



Ppia

The picture was kindly provided by our customer

Note

For research use only.