

**Product Name: CYP2W1 Rabbit Polyclonal Antibody**  
**Catalog #: APRab09662**



## Summary

<b>Production Name</b>	CYP2W1 Rabbit Polyclonal Antibody
<b>Description</b>	Rabbit Polyclonal Antibody
<b>Host</b>	Rabbit
<b>Application</b>	IF,IHC,WB,
<b>Reactivity</b>	Human,Rat,Mouse

## Performance

<b>Conjugation</b>	Unconjugated
<b>Modification</b>	Unmodified
<b>Isotype</b>	IgG
<b>Clonality</b>	Polyclonal
<b>Form</b>	Liquid
<b>Storage</b>	Store at 4°C short term. Aliquot and store at -20°C long term. Avoid freeze/thaw cycles.
<b>Buffer</b>	Liquid in PBS containing 50% glycerol, 0.5% BSA and 0.02% New type preservative N.
<b>Purification</b>	Affinity purification

## Immunogen

<b>Gene Name</b>	CYP2W1
<b>Alternative Names</b>	CYP2W1; Cytochrome P450 2W1; CYP11W1
<b>Gene ID</b>	54905.0
<b>SwissProt ID</b>	Q8TAV3.The antiserum was produced against synthesized peptide derived from human Cytochrome P450 2W1. AA range:311-360

## Application

<b>Dilution Ratio</b>	WB 1:500 - 1:2000 IHC 1:100 - 1:300. IF 1:200 - 1:1000. ELISA: 1:40000. Not yet tested in other applications.
<b>Molecular Weight</b>	55kD

**Product Name: CYP2W1 Rabbit Polyclonal Antibody**  
**Catalog #: APRab09662**

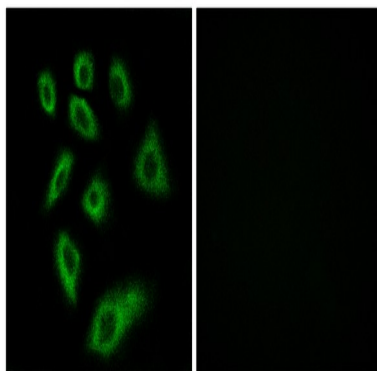


## Background

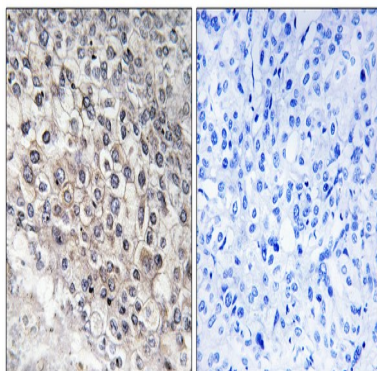
This gene encodes a member of the cytochrome P450 superfamily of enzymes. The cytochrome P450 proteins are monooxygenases which catalyze many reactions involved in drug metabolism and synthesis of cholesterol, steroids and other lipids. [provided by RefSeq, Jul 2008],cofactor:Heme group.,similarity:Belongs to the cytochrome P450 family.,

## Research Area

## Image Data

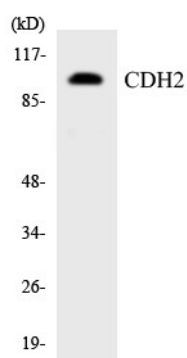


Immunofluorescence analysis of HUVEC cells, using Cytochrome P450 2W1 Antibody. The picture on the right is blocked with the synthesized peptide.

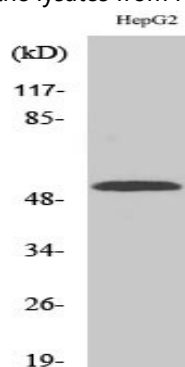


Immunohistochemistry analysis of paraffin-embedded human liver carcinoma tissue, using Cytochrome P450 2W1 Antibody. The picture on the right is blocked with the synthesized peptide.

**Product Name: CYP2W1 Rabbit Polyclonal Antibody**  
**Catalog #: APRab09662**



Western blot analysis of the lysates from HT-29 cells using CDH2 antibody.



Western Blot analysis of various cells using CYP2W1 Polyclonal Antibody

## **Note**

For research use only.