

Product Name: CYP20A1 Rabbit Polyclonal Antibody
Catalog #: APRab09633



Summary

Production Name	CYP20A1 Rabbit Polyclonal Antibody
Description	Rabbit Polyclonal Antibody
Host	Rabbit
Application	WB,ELISA
Reactivity	Human,Rat,Mouse

Performance

Conjugation	Unconjugated
Modification	Unmodified
Isotype	IgG
Clonality	Polyclonal
Form	Liquid
Storage	Store at 4°C short term. Aliquot and store at -20°C long term. Avoid freeze/thaw cycles.
Buffer	Liquid in PBS containing 50% glycerol, 0.5% BSA and 0.02% New type preservative N.
Purification	Affinity purification

Immunogen

Gene Name	CYP20A1
Alternative Names	CYP20A1; Cytochrome P450 20A1
Gene ID	57404.0
SwissProt ID	Q6UW02.The antiserum was produced against synthesized peptide derived from human Cytochrome P450 20A1. AA range:191-240

Application

Dilution Ratio	WB 1:500 - 1:2000. ELISA: 1:40000.
Molecular Weight	53kD

Background

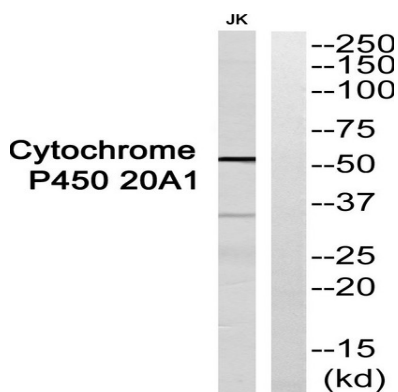
Product Name: CYP20A1 Rabbit Polyclonal Antibody
Catalog #: APRab09633



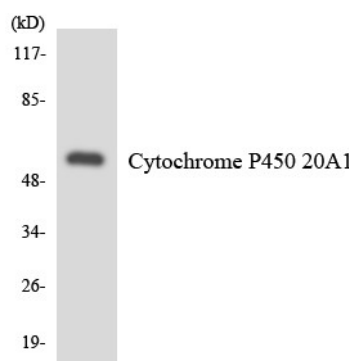
cytochrome P450 family 20 subfamily A member 1(CYP20A1) Homo sapiens This gene encodes a member of the cytochrome P450 superfamily of enzymes. The cytochrome P450 proteins are monooxygenases that catalyze many reactions involved in drug metabolism and synthesis of cholesterol, steroids and other lipids. This protein lacks one amino acid of the conserved heme binding site. It also lacks the conserved I-helix motif AGX(D,E)T, suggesting that its substrate may carry its own oxygen. [provided by RefSeq, Jul 2008],catalytic activity:RH + reduced flavoprotein + O(2) = ROH + oxidized flavoprotein + H(2)O.,cofactor:Heme group.,similarity:Belongs to the cytochrome P450 family.,

Research Area

Image Data



Western blot analysis of Cytochrome P450 20A1 Antibody. The lane on the right is blocked with the Cytochrome P450 20A1 peptide.



Western blot analysis of the lysates from HUVEC cells using Cytochrome P450 20A1 antibody.

Note

For research use only.