

**Product Name: CYFIP2 Rabbit Polyclonal Antibody**  
**Catalog #: APRab09616**



## Summary

|                        |                                   |
|------------------------|-----------------------------------|
| <b>Production Name</b> | CYFIP2 Rabbit Polyclonal Antibody |
| <b>Description</b>     | Rabbit Polyclonal Antibody        |
| <b>Host</b>            | Rabbit                            |
| <b>Application</b>     | WB,IHC,ELISA                      |
| <b>Reactivity</b>      | Human,Mouse,Rat                   |

## Performance

|                     |  |
|---------------------|--|
| <b>Conjugation</b>  | Unconjugated   |
| <b>Modification</b> | Unmodified   |
| <b>Isotype</b>      | IgG  |
| <b>Clonality</b>    | Polyclonal   |
| <b>Form</b>         | Liquid   |
| <b>Storage</b>      | Store at 4°C short term. Aliquot and store at -20°C long term. Avoid freeze/thaw cycles. |
| <b>Buffer</b>       | Liquid in PBS containing 50% glycerol, 0.5% BSA and 0.02% New type preservative N.       |
| <b>Purification</b> | Affinity purification  |

## Immunogen

|                          |   |
|--------------------------|---|
| <b>Gene Name</b>         | CYFIP2  |
| <b>Alternative Names</b> | Cytoplasmic FMR1-interacting protein 2 (p53-inducible protein 121)    |
| <b>Gene ID</b>           | 26999.0   |
| <b>SwissProt ID</b>      | Q96F07.Synthesized peptide derived from CYFIP2 at AA range: 1171-1220 |

## Application

|                         |   |
|-------------------------|---|
| <b>Dilution Ratio</b>   | WB 1:500 - 1:2000. IHC: 1:100-1:300. ELISA: 1:20000.. |
| <b>Molecular Weight</b> | 150+45kD  |

## Background

disease:Up-regulated significantly in CD4+ T lymphocytes from patients with multiple sclerosis (at protein

**Product Name: CYFIP2 Rabbit Polyclonal Antibody**  
**Catalog #: AP Rab09616**

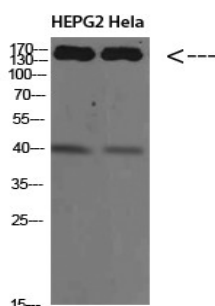


level), function: Involved in T-cell adhesion and p53-dependent induction of apoptosis. Does not bind RNA., induction: By p53., RNA editing: Partially edited. Editing appears to be brain-specific., similarity: Belongs to the CYFIP family., subcellular location: Highly expressed in the perinuclear region. Enriched in synaptosomes. Treatment with leptomycin-B triggers translocation to the nucleus., subunit: Interacts with FMR1, FXR1 AND FXR2. Component of the WAVE1 complex composed of ABI2, CYFIP2, C3orf10/HSPC300, NCKAP1 and WASF1/WAVE1. CYFIP2 binds to activated RAC1 which causes the complex to dissociate, releasing activated WASF1. The complex can also be activated by NCK1., disease: Up-regulated significantly in CD4+ T lymphocytes from patients with multiple sclerosis (at protein level), function: Involved in T-cell adhesion and p53-dependent induction of apoptosis. Does not bind RNA., induction: By p53., RNA editing: Partially edited. Editing appears to be brain-specific., similarity: Belongs to the CYFIP family., subcellular location: Highly expressed in the perinuclear region. Enriched in synaptosomes. Treatment with leptomycin-B triggers translocation to the nucleus., subunit: Interacts with FMR1, FXR1 AND FXR2. Component of the WAVE1 complex composed of ABI2, CYFIP2, C3orf10/HSPC300, NCKAP1 and WASF1/WAVE1. CYFIP2 binds to activated RAC1 which causes the complex to dissociate, releasing activated WASF1. The complex can also be activated by NCK1.,

## Research Area

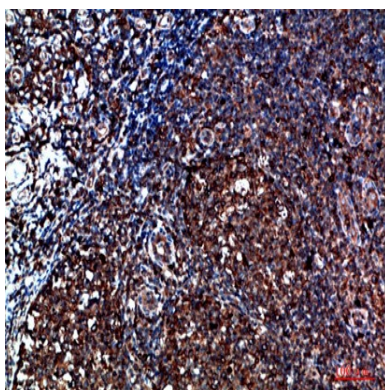
Regulates Actin and Cytoskeleton;

## Image Data

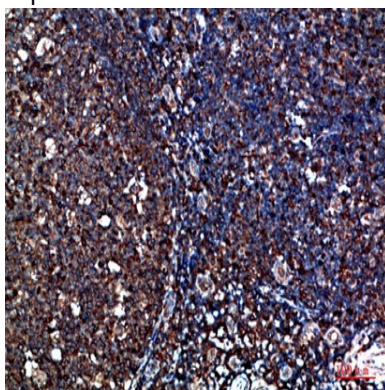


Western Blot analysis of HEPG2 HeLa cells using CYFIP2 Polyclonal Antibody diluted at 1:500. Secondary antibody was diluted at 1:20000

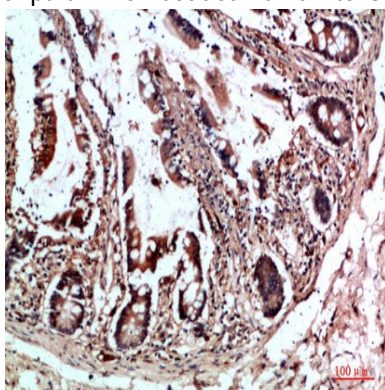
**Product Name: CYFIP2 Rabbit Polyclonal Antibody**  
**Catalog #: APRab09616**



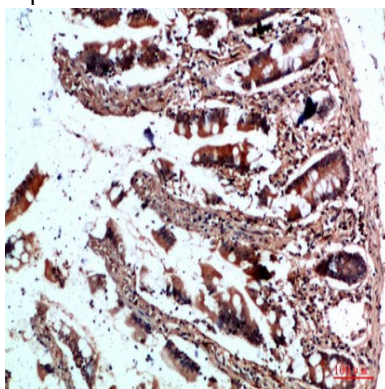
Immunohistochemical analysis of paraffin-embedded human-tonsil, antibody was diluted at 1:200



Immunohistochemical analysis of paraffin-embedded human-tonsil, antibody was diluted at 1:200



Immunohistochemical analysis of paraffin-embedded human-colon, antibody was diluted at 1:200



**Product Name: CYFIP2 Rabbit Polyclonal Antibody**  
**Catalog #: APRab09616**



---

Immunohistochemical analysis of paraffin-embedded human-colon, antibody was diluted at 1:200

**Note**

For research use only.