

Product Name: Cyclophilin D Rabbit Polyclonal Antibody
Catalog #: APRab09610

Summary

| | |
|------------------------|--|
| Production Name | Cyclophilin D Rabbit Polyclonal Antibody |
| Description | Rabbit Polyclonal Antibody |
| Host | Rabbit |
| Application | WB,IHC,ELISA |
| Reactivity | Human,Mouse,Rat |

Performance

| | |
|---------------------|--|
| Conjugation | Unconjugated |
| Modification | Unmodified |
| Isotype | IgG |
| Clonality | Polyclonal |
| Form | Liquid |
| Storage | Store at 4°C short term. Aliquot and store at -20°C long term. Avoid freeze/thaw cycles. |
| Buffer | Liquid in PBS containing 50% glycerol, 0.5% BSA and 0.02% New type preservative N. |
| Purification | Affinity purification |

Immunogen

| | |
|--------------------------|---|
| Gene Name | PPID PPID; CYP40; CYPD; Peptidyl-prolyl cis-trans isomerase D; PPIase D; 40 kDa peptidyl-prolyl cis-trans isomerase; Cyclophilin-40; CYP-40; Cyclophilin-related protein; Rotamase D |
| Alternative Names | |
| Gene ID | 5481.0 |
| SwissProt ID | Q08752.The antiserum was produced against synthesized peptide derived from the C-terminal region of human PPID. AA range:321-370 |

Application

| | |
|-------------------------|--|
| Dilution Ratio | WB 1:500 - 1:2000. IHC-p: 1:100-300 ELISA: 1:20000.. |
| Molecular Weight | 40kD |

Product Name: Cyclophilin D Rabbit Polyclonal Antibody
Catalog #: AP Rab09610



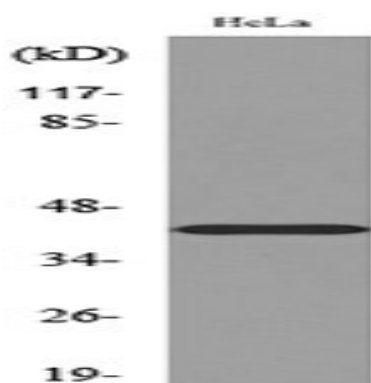
Background

The protein encoded by this gene is a member of the peptidyl-prolyl cis-trans isomerase (PPIase) family. PPIases catalyze the cis-trans isomerization of proline imidic peptide bonds in oligopeptides and accelerate the folding of proteins. This protein has been shown to possess PPIase activity and, similar to other family members, can bind to the immunosuppressant cyclosporin A. [provided by RefSeq, Jul 2008], catalytic activity: Peptidylproline (omega=180) = peptidylproline (omega=0), enzyme regulation: Less sensitive to inhibition by cyclosporin A than is CYP-18, function: PPIases accelerate the folding of proteins, function: PPIases accelerate the folding of proteins. It catalyzes the cis-trans isomerization of proline imidic peptide bonds in oligopeptides, online information: Cyclophilin entry, similarity: Belongs to the cyclophilin-type PPIase family, similarity: Belongs to the cyclophilin-type PPIase family. PPIase D subfamily, similarity: Contains 1 PPIase cyclophilin-type domain, similarity: Contains 3 TPR repeats, subunit: Binds ESR1, tissue specificity: Widely expressed,

Research Area

Calcium; Parkinson's disease; Huntington's disease;

Image Data

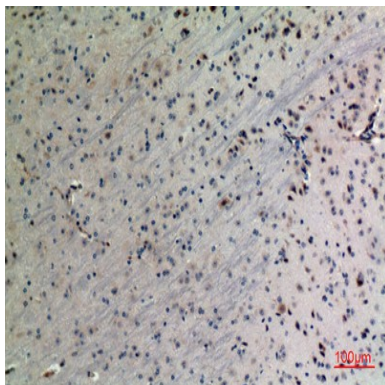


Western blot analysis of lysate from HeLa cells, using PPID Antibody.



Western Blot analysis of HeLa cells using Cyclophilin D Polyclonal Antibody.. Secondary antibody was diluted at 1:20000

Product Name: Cyclophilin D Rabbit Polyclonal Antibody
Catalog #: APRab09610



Immunohistochemical analysis of paraffin-embedded mouse-brain, antibody was diluted at 1:100

Note

For research use only.