

Product Name: Cyclin T2 Rabbit Polyclonal Antibody
Catalog #: APRab09607



Summary

Production Name	Cyclin T2 Rabbit Polyclonal Antibody
Description	Rabbit Polyclonal Antibody
Host	Rabbit
Application	IHC,ELISA
Reactivity	Human,Mouse,Rat

Performance

Conjugation	Unconjugated
Modification	Unmodified
Isotype	IgG
Clonality	Polyclonal
Form	Liquid
Storage	Store at 4°C short term. Aliquot and store at -20°C long term. Avoid freeze/thaw cycles.
Buffer	Liquid in PBS containing 50% glycerol, 0.5% BSA and 0.02% New type preservative N.
Purification	Affinity purification

Immunogen

Gene Name	CCNT2
Alternative Names	Cyclin-T2 (CycT2)
Gene ID	905.0
SwissProt ID	O60583.Synthesized peptide derived from human Cyclin T2 AA range: 510-590

Application

Dilution Ratio	IHC 1:50-200
Molecular Weight	73kD

Background

The protein encoded by this gene belongs to the highly conserved cyclin family, whose members are characterized by a dramatic periodicity in protein abundance through the cell cycle. Cyclins function as regulators of CDK kinases. Different

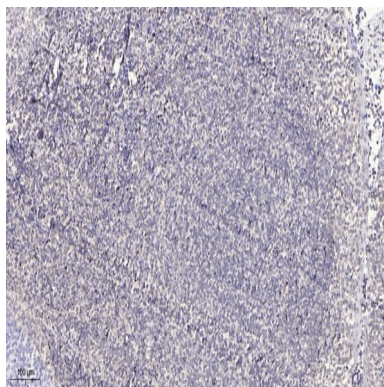
Product Name: Cyclin T2 Rabbit Polyclonal Antibody
Catalog #: APRab09607



cyclins exhibit distinct expression and degradation patterns which contribute to the temporal coordination of each mitotic event. This cyclin and its kinase partner CDK9 were found to be subunits of the transcription elongation factor p-TEFb. The p-TEFb complex containing this cyclin was reported to interact with, and act as a negative regulator of human immunodeficiency virus type 1 (HIV-1) Tat protein. A pseudogene of this gene is found on chromosome 1. Alternate splicing results in multiple transcript variants.[provided by RefSeq, Dec 2010],function:Regulatory subunit of the cyclin-dependent kinase pair (CDK9/cyclin T) complex, also called positive transcription elongation factor B (P-TEFb), which is proposed to facilitate the transition from abortive to production elongation by phosphorylating the CTD (carboxy-terminal domain) of the large subunit of RNA polymerase II (RNAP II),similarity:Belongs to the cyclin family. Cyclin C subfamily.,subunit:Associates with CDK9 to form P-TEFb. Isoform A and isoform B interact with HIV-2 and SIV Tat. Does not bind efficiently to the transactivation domain of the HIV-1 Tat,tissue specificity:Ubiquitously expressed,

Research Area

Image Data



Immunohistochemical analysis of paraffin-embedded human tonsil. 1, Antibody was diluted at 1:200 (4° overnight) . 2, Tris-EDTA,pH9.0 was used for antigen retrieval. 3,Secondary antibody was diluted at 1:200 (room temperature, 30min) .

Note

For research use only.