

Product Name: CYB561D2 Rabbit Polyclonal Antibody
Catalog #: APRab09571



Summary

Production Name	CYB561D2 Rabbit Polyclonal Antibody
Description	Rabbit Polyclonal Antibody
Host	Rabbit
Application	WB,ELISA
Reactivity	Human,Rat,Mouse

Performance

Conjugation	Unconjugated
Modification	Unmodified
Isotype	IgG
Clonality	Polyclonal
Form	Liquid
Storage	Store at 4°C short term. Aliquot and store at -20°C long term. Avoid freeze/thaw cycles.
Buffer	Liquid in PBS containing 50% glycerol, 0.5% BSA and 0.02% New type preservative N.
Purification	Affinity purification

Immunogen

Gene Name	CYB561D2
Alternative Names	CYB561D2; 101F6; LUCA12.2; Cytochrome b561 domain-containing protein 2; Putative tumor suppressor protein 101F6
Gene ID	11068.0
SwissProt ID	O14569.The antiserum was produced against synthesized peptide derived from human C56D2. AA range:55-104

Application

Dilution Ratio	WB 1:500 - 1:2000. ELISA: 1:20000
Molecular Weight	24kD

Product Name: CYB561D2 Rabbit Polyclonal Antibody
Catalog #: APRab09571

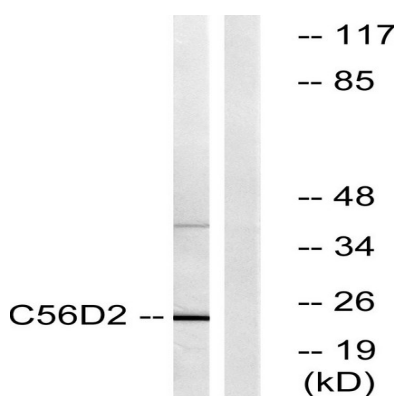


Background

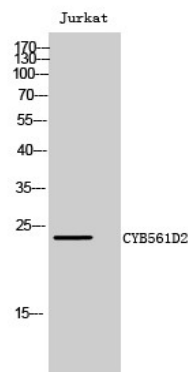
cofactor: Binds 2 heme groups non-covalently, similarity: Contains 1 cytochrome b561 domain, cofactor: Binds 2 heme groups non-covalently, similarity: Contains 1 cytochrome b561 domain,

Research Area

Image Data



Western blot analysis of lysates from Jurkat cells, using C56D2 Antibody. The lane on the right is blocked with the synthesized peptide.



Western Blot analysis of Jurkat cells using CYB561D2 Polyclonal Antibody

Note

For research use only.