

Product Name: CtBP1 Rabbit Polyclonal Antibody
Catalog #: APRab09491



Summary

| | |
|------------------------|----------------------------------|
| Production Name | CtBP1 Rabbit Polyclonal Antibody |
| Description | Rabbit Polyclonal Antibody |
| Host | Rabbit |
| Application | IHC, WB, ELISA |
| Reactivity | Human, Mouse, Rat |

Performance

| | |
|---------------------|--|
| Conjugation | Unconjugated |
| Modification | Unmodified |
| Isotype | IgG |
| Clonality | Polyclonal |
| Form | Liquid |
| Storage | Store at 4°C short term. Aliquot and store at -20°C long term. Avoid freeze/thaw cycles. |
| Buffer | Liquid in PBS containing 50% glycerol, 0.5% BSA and 0.02% New type preservative N. |
| Purification | Affinity purification |

Immunogen

| | |
|--------------------------|--|
| Gene Name | CTBP1 |
| Alternative Names | CTBP1; CTBP; C-terminal-binding protein 1; CtBP1 |
| Gene ID | 1487.0 |
| SwissProt ID | Q13363. The antiserum was produced against synthesized peptide derived from human CtBP1. AA range: 388-437 |

Application

| | |
|-------------------------|--|
| Dilution Ratio | WB 1:500 - 1:2000. IHC 1:100 - 1:300. ELISA: 1:20000.. |
| Molecular Weight | 48kD |

Background

Product Name: CtBP1 Rabbit Polyclonal Antibody
Catalog #: APRab09491

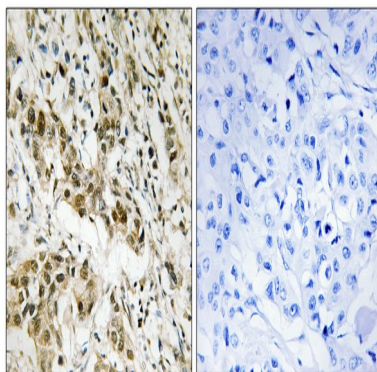


This gene encodes a protein that binds to the C-terminus of adenovirus E1A proteins. This phosphoprotein is a transcriptional repressor and may play a role during cellular proliferation. This protein and the product of a second closely related gene, CTBP2, can dimerize. Both proteins can also interact with a polycomb group protein complex which participates in regulation of gene expression during development. Alternative splicing of transcripts from this gene results in multiple transcript variants. [provided by RefSeq, Jul 2008],cofactor:NAD. Required for efficient interaction with E1A. Cofactor binding induces a conformation change.,function:Involved in controlling the equilibrium between tubular and stacked structures in the Golgi complex (By similarity). Co-repressor targeting diverse transcription regulators such as GLIS2. Has dehydrogenase activity.,PTM:ADP-ribosylated; when cells are exposed to brefeldin-A (BFA),PTM:Sumoylation on Lys-428 is promoted by the E3 SUMO-protein ligase CBX4.,PTM:The level of phosphorylation appears to be regulated during the cell cycle. Phosphorylated upon DNA damage, probably by ATM or ATR. Phosphorylation by HIPK2 on Ser-422 induces proteasomal degradation.,similarity:Belongs to the D-isomer specific 2-hydroxyacid dehydrogenase family.,subunit:Interacts with the C-terminus of adenovirus E1A protein, ELK3 and CTIP via their consensus motif P-X-[DNS]-L-[STVA]. Can form homodimers or heterodimers of CTBP1 and CTBP2. Interacts with FOXP2, HDAC4, HDAC5 and HDAC9. Interacts with GLIS2 but not GLIS1 or GLIS3 (By similarity). Interacts with FOXP1, HIPK2, PNN and NRIP1. Interacts with ZFHX1B and WIZ. Interacts with Epstein-Barr virus EBNA3 and EBNA6.,

Research Area

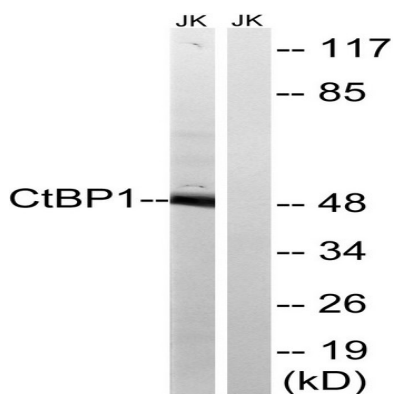
WNT;WNT-T CELLNotch;Pathways in cancer;Chronic myeloid leukemia;

Image Data

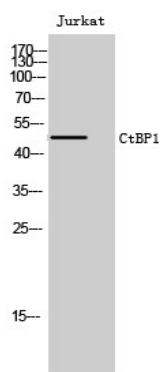


Immunohistochemistry analysis of paraffin-embedded human breast carcinoma tissue, using CtBP1 Antibody. The picture on the right is blocked with the synthesized peptide.

Product Name: CtBP1 Rabbit Polyclonal Antibody
Catalog #: APRab09491



Western blot analysis of lysates from Jurkat cells, using CtBP1 Antibody. The lane on the right is blocked with the synthesized peptide.



Western Blot analysis of Jurkat cells using CtBP1 Polyclonal Antibody

Note

For research use only.