

**Product Name: CTAG2 Rabbit Polyclonal Antibody**  
**Catalog #: APRab09487**



## Summary

<b>Production Name</b>	CTAG2 Rabbit Polyclonal Antibody
<b>Description</b>	Rabbit Polyclonal Antibody
<b>Host</b>	Rabbit
<b>Application</b>	WB
<b>Reactivity</b>	Human,Rat,Mouse

## Performance

<b>Conjugation</b>	Unconjugated
<b>Modification</b>	Unmodified
<b>Isotype</b>	IgG
<b>Clonality</b>	Polyclonal
<b>Form</b>	Liquid
<b>Storage</b>	Store at 4°C short term. Aliquot and store at -20°C long term. Avoid freeze/thaw cycles.
<b>Buffer</b>	Liquid in PBS containing 50% glycerol, and 0.02% New type preservative N.
<b>Purification</b>	Affinity purification

## Immunogen

<b>Gene Name</b>	CTAG2 ESO2 LAGE1
<b>Alternative Names</b>	
<b>Gene ID</b>	30848.0
<b>SwissProt ID</b>	O75638.Synthesized peptide derived from part region of human protein

## Application

<b>Dilution Ratio</b>	WB 1:500-2000 ELISA 1:5000-20000
<b>Molecular Weight</b>	23kD

## Background

This gene encodes an autoimmunogenic tumor antigen that belongs to the ESO/LAGE family of cancer-testis antigens. This protein is expressed in a wide array of cancers including melanoma, breast cancer, bladder cancer and prostate cancer. This

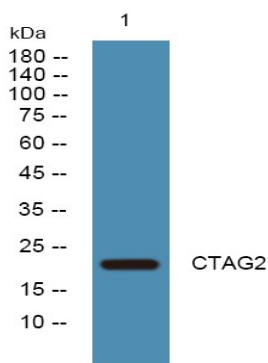
**Product Name: CTAG2 Rabbit Polyclonal Antibody**  
**Catalog #: APRab09487**



protein is also expressed in normal testis tissue. An alternative open reading frame product of this gene has been described in PMID:10399963. This alternate protein, termed CAMEL, is a tumor antigen that is recognized by melanoma-specific cytotoxic T-lymphocytes. Alternate splicing results in multiple transcript variants. [provided by RefSeq, Sep 2013],domain:A transmembrane domain is present in isoform LAGE-1A.,similarity:Belongs to the CTAG family.,tissue specificity:Testis and very low level in placenta and in some uterus samples. Observed in 25-50% of tumor samples of melanomas, non-small-cell lung carcinomas, bladder, prostate and head and neck cancers.,

## Research Area

## Image Data



Western blot analysis of lysates from DU145 cells, primary antibody was diluted at 1:1000, 4°over night

## Note

For research use only.