

Product Name: CstF-64 Rabbit Polyclonal Antibody
Catalog #: APRab09474



Summary

| | |
|------------------------|------------------------------------|
| Production Name | CstF-64 Rabbit Polyclonal Antibody |
| Description | Rabbit Polyclonal Antibody |
| Host | Rabbit |
| Application | IF, WB, ELISA |
| Reactivity | Human, Mouse |

Performance

| | |
|---------------------|--|
| Conjugation | Unconjugated |
| Modification | Unmodified |
| Isotype | IgG |
| Clonality | Polyclonal |
| Form | Liquid |
| Storage | Store at 4°C short term. Aliquot and store at -20°C long term. Avoid freeze/thaw cycles. |
| Buffer | Liquid in PBS containing 50% glycerol, 0.5% BSA and 0.02% New type preservative N. |
| Purification | Affinity purification |

Immunogen

| | |
|--------------------------|---|
| Gene Name | CSTF2 |
| Alternative Names | CSTF2; Cleavage stimulation factor subunit 2; CF-1 64 kDa subunit; Cleavage stimulation factor 64 kDa subunit; CSTF 64 kDa subunit; CstF-64 |
| Gene ID | 1478.0 |
| SwissProt ID | P33240. The antiserum was produced against synthesized peptide derived from human CSTF2. AA range: 11-60 |

Application

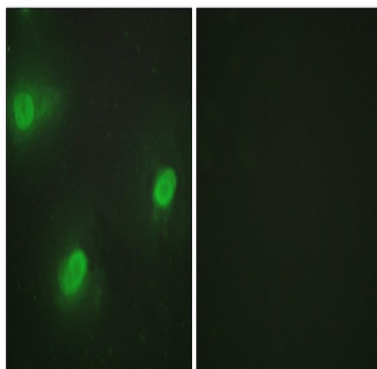
| | |
|-------------------------|--|
| Dilution Ratio | WB 1:500 - 1:2000. IF 1:200 - 1:1000. ELISA: 1:5000. Not yet tested in other applications. |
| Molecular Weight | 60kD |

Background

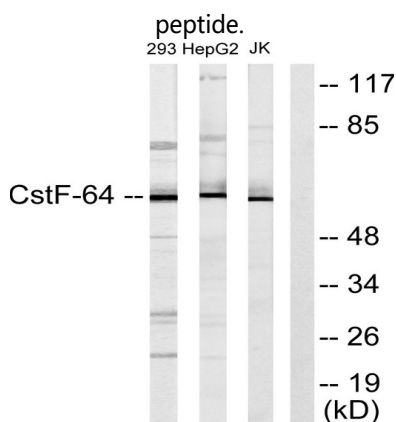
This gene encodes a nuclear protein with an RRM (RNA recognition motif) domain. The protein is a member of the cleavage stimulation factor (CSTF) complex that is involved in the 3' end cleavage and polyadenylation of pre-mRNAs. Specifically, this protein binds GU-rich elements within the 3'-untranslated region of mRNAs. [provided by RefSeq, Jul 2008],function:One of the multiple factors required for polyadenylation and 3'-end cleavage of mammalian pre-mRNAs. This subunit is directly involved in the binding to pre-mRNAs.,induction:Up-regulated during the G0 to S phase transition.,PTM:Phosphorylated upon DNA damage, probably by ATM or ATR.,similarity:Contains 1 RRM (RNA recognition motif) domain.,subunit:The CSTF complex is composed of CSTF1 (50 kDa subunit), CSTF2 (64 kDa subunit) and CSTF3 (77 kDa subunit). CSTF2 directly interacts with CSTF3, SYMPK and RPO2TC1. Interacts with HSF1 in heat-stressed cells. Interacts with FIP1L1.,

Research Area

Image Data

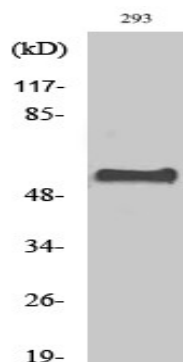


Immunofluorescence analysis of HeLa cells, using CSTF2 Antibody. The picture on the right is blocked with the synthesized



Western blot analysis of lysates from 293, K562, and Jurkat cells, using CSTF2 Antibody. The lane on the right is blocked with the synthesized peptide.

Product Name: CstF-64 Rabbit Polyclonal Antibody
Catalog #: APRab09474



Western Blot analysis of various cells using CstF-64 Polyclonal Antibody diluted at 1 : 1000 cells nucleus extracted by Minute
TM Cytoplasmic and Nuclear Fractionation kit (SC-003, Inventbiotech, MN, USA) .

Note

For research use only.