

Product Name: CstF-50 Rabbit Polyclonal Antibody
Catalog #: APRab09473



Summary

Production Name	CstF-50 Rabbit Polyclonal Antibody
Description	Rabbit Polyclonal Antibody
Host	Rabbit
Application	WB,ELISA
Reactivity	Human,Mouse,Rat

Performance

Conjugation	Unconjugated
Modification	Unmodified
Isotype	IgG
Clonality	Polyclonal
Form	Liquid
Storage	Store at 4°C short term. Aliquot and store at -20°C long term. Avoid freeze/thaw cycles.
Buffer	Liquid in PBS containing 50% glycerol, 0.5% BSA and 0.02% New type preservative N.
Purification	Affinity purification

Immunogen

Gene Name	CSTF1
Alternative Names	CSTF1; Cleavage stimulation factor subunit 1; CF-1 50 kDa subunit; Cleavage stimulation factor 50 kDa subunit; CSTF 50 kDa subunit; CstF-50
Gene ID	1477.0
SwissProt ID	Q05048.The antiserum was produced against synthesized peptide derived from human CSTF1. AA range:1-50

Application

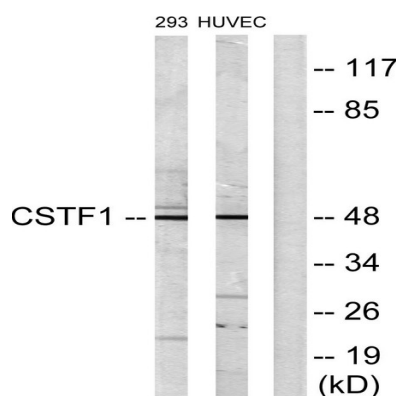
Dilution Ratio	WB 1:500 - 1:2000. ELISA: 1:20000
Molecular Weight	48kD

Background

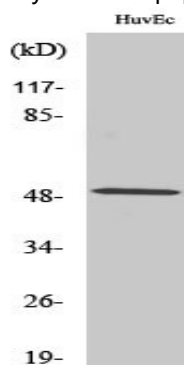
This gene encodes one of three subunits which combine to form cleavage stimulation factor (CSTF). CSTF is involved in the polyadenylation and 3'-end cleavage of pre-mRNAs. Similar to mammalian G protein beta subunits, this protein contains transducin-like repeats. Several transcript variants with different 5' UTR, but encoding the same protein, have been found for this gene. [provided by RefSeq, Jul 2008],domain:N-terminus mediates homodimerization.,domain:The WD6 domain is required for interaction with BARD1. WD domains are responsible for interaction with CSTF3.,function:One of the multiple factors required for polyadenylation and 3'-end cleavage of mammalian pre-mRNAs. May be responsible for the interaction of CSTF with other factors to form a stable complex on the pre-mRNA.,PTM:The N-terminus is blocked.,similarity:Contains 6 WD repeats.,subunit:Homodimer. The CSTF complex is composed of CSTF1 (50 kDa subunit), CSTF2 (64 kDa subunit) and CSTF3 (77 kDa subunit). Interacts directly with CSTF3. Interacts with BARD1.,

Research Area

Image Data



Western blot analysis of lysates from HUVEC and 293 cells, using CSTF1 Antibody. The lane on the right is blocked with the synthesized peptide.



Western Blot analysis of various cells using CstF-50 Polyclonal Antibody cells nucleus extracted by Minute TM Cytoplasmic and Nuclear Fractionation kit (SC-003, Inventbiotech, MN, USA) .

Product Name: CstF-50 Rabbit Polyclonal Antibody
Catalog #: APRab09473



Note

For research use only.