

Product Name: CST9L Rabbit Polyclonal Antibody
Catalog #: APRab09470



Summary

| | |
|------------------------|----------------------------------|
| Production Name | CST9L Rabbit Polyclonal Antibody |
| Description | Rabbit Polyclonal Antibody |
| Host | Rabbit |
| Application | IHC,ELISA |
| Reactivity | Human,Rat,Mouse |

Performance

| | |
|---------------------|--|
| Conjugation | Unconjugated |
| Modification | Unmodified |
| Isotype | IgG |
| Clonality | Polyclonal |
| Form | Liquid |
| Storage | Store at 4°C short term. Aliquot and store at -20°C long term. Avoid freeze/thaw cycles. |
| Buffer | Liquid in PBS containing 50% glycerol, 0.5% BSA and 0.02% New type preservative N. |
| Purification | Affinity purification |

Immunogen

| | |
|--------------------------|---|
| Gene Name | CST9L |
| Alternative Names | CST9L; Cystatin-9-like |
| Gene ID | 128821.0 |
| SwissProt ID | Q9H4G1.The antiserum was produced against synthesized peptide derived from human CST9L. AA range:81-130 |

Application

| | |
|-------------------------|--------------------------------|
| Dilution Ratio | IHC 1:100-1:300 ELISA: 1:10000 |
| Molecular Weight | |

Background

The cystatin superfamily encompasses proteins that contain multiple cystatin-like sequences. Some of the members are

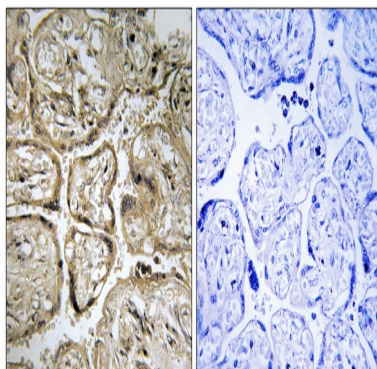
Product Name: CST9L Rabbit Polyclonal Antibody
Catalog #: APRab09470



active cysteine protease inhibitors, while others have lost or perhaps never acquired this inhibitory activity. There are three inhibitory families in the superfamily, including the type 1 cystatins (stefins), type 2 cystatins and the kininogens. The type 2 cystatin proteins are a class of cysteine proteinase inhibitors found in a variety of human fluids and secretions. The cystatin locus on chromosome 20 contains the majority of the type 2 cystatin genes and pseudogenes. This gene is located in the cystatin locus and encodes a protein similar to mouse cystatin 9. Based on its testis-specific expression, it is likely to have a role in tissue reorganization during early testis development. [provided by RefSeq, Jul 2008],similarity:Belongs to the cystatin family.,

Research Area

Image Data



Immunohistochemistry analysis of paraffin-embedded human placenta, using CST9L Antibody. The picture on the right is blocked with the synthesized peptide.

Note

For research use only.