

Product Name: CRF Rabbit Polyclonal Antibody
Catalog #: APRab09390



Summary

Production Name	CRF Rabbit Polyclonal Antibody
Description	Rabbit Polyclonal Antibody
Host	Rabbit
Application	IHC,ELISA
Reactivity	Human,Rat,Mouse

Performance

Conjugation	Unconjugated
Modification	Unmodified
Isotype	IgG
Clonality	Polyclonal
Form	Liquid
Storage	Store at 4°C short term. Aliquot and store at -20°C long term. Avoid freeze/thaw cycles.
Buffer	Liquid in PBS containing 50% glycerol, 0.5% BSA and 0.02% New type preservative N.
Purification	Affinity purification

Immunogen

Gene Name	CRH
Alternative Names	CRH; Corticoliberin; Corticotropin-releasing factor; CRF; Corticotropin-releasing hormone
Gene ID	1392.0
SwissProt ID	P06850.The antiserum was produced against synthesized peptide derived from human CRF. AA range:104-153

Application

Dilution Ratio	IHC 1:100-1:300 ELISA: 1:10000
Molecular Weight	

Background

Product Name: CRF Rabbit Polyclonal Antibody
Catalog #: APRab09390

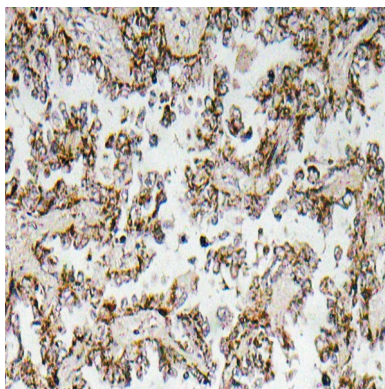


This gene encodes a member of the corticotropin-releasing factor family. The encoded preproprotein is proteolytically processed to generate the mature neuropeptide hormone. In response to stress, this hormone is secreted by the paraventricular nucleus (PVN) of the hypothalamus, binds to corticotropin releasing hormone receptors and stimulates the release of adrenocorticotrophic hormone from the pituitary gland. Marked reduction in this protein has been observed in association with Alzheimer's disease. Autosomal recessive hypothalamic corticotropin deficiency has multiple and potentially fatal metabolic consequences including hypoglycemia and hepatitis. In addition to production in the hypothalamus, this protein is also synthesized in peripheral tissues, such as T lymphocytes, and is highly expressed in the placenta. In the placenta it is a marker that determines the length of gestation. **function:** This hormone from hypothalamus regulates the release of corticotropin from pituitary gland., **online information:** Corticotropin-releasing hormone entry, **similarity:** Belongs to the sauvagine/corticotropin-releasing factor/urotensin I family.,

Research Area

Long-term depression;

Image Data



Immunohistochemistry analysis of CRF antibody in paraffin-embedded human lung carcinoma tissue.

Note

For research use only.