

**Product Name: COX19 Rabbit Polyclonal Antibody**  
**Catalog #: APRab09270**



## Summary

<b>Production Name</b>	COX19 Rabbit Polyclonal Antibody
<b>Description</b>	Rabbit Polyclonal Antibody
<b>Host</b>	Rabbit
<b>Application</b>	IHC,ELISA
<b>Reactivity</b>	Human,Mouse

## Performance

<b>Conjugation</b>	Unconjugated
<b>Modification</b>	Unmodified
<b>Isotype</b>	IgG
<b>Clonality</b>	Polyclonal
<b>Form</b>	Liquid
<b>Storage</b>	Store at 4°C short term. Aliquot and store at -20°C long term. Avoid freeze/thaw cycles.
<b>Buffer</b>	Liquid in PBS containing 50% glycerol, 0.5% BSA and 0.02% New type preservative N.
<b>Purification</b>	Affinity purification

## Immunogen

<b>Gene Name</b>	COX19
<b>Alternative Names</b>	COX19; Cytochrome c oxidase assembly protein COX19; hCOX19
<b>Gene ID</b>	90639.0
<b>SwissProt ID</b>	Q49B96.The antiserum was produced against synthesized peptide derived from human COX19. AA range:10-59

## Application

<b>Dilution Ratio</b>	IHC 1:100-1:300 ELISA: 1:20000
<b>Molecular Weight</b>	

## Background

COX19 encodes a cytochrome c oxidase (COX)-assembly protein. The *S. cerevisiae* Cox19 protein may play a role in metal

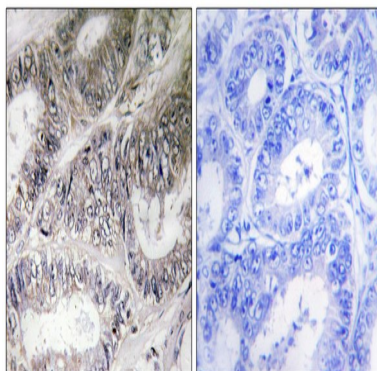
**Product Name: COX19 Rabbit Polyclonal Antibody**  
**Catalog #: APRab09270**



transport to the mitochondrial intermembrane space and assembly of complex IV of the mitochondrial respiratory chain (Sacconi et al., 2005 [PubMed 16212937]).[supplied by OMIM, Mar 2008],function:May be required for the assembly of mitochondrial cytochrome c oxidase.,similarity:Belongs to the COX19 family.,similarity:Contains 1 CHCH domain.,tissue specificity:Ubiquitously expressed. Highly expressed in skeletal muscle.,

## Research Area

## Image Data



Immunohistochemistry analysis of paraffin-embedded human colon carcinoma tissue, using COX19 Antibody. The picture on the right is blocked with the synthesized peptide.

## Note

For research use only.