

**Product Name: Connexin 46 Rabbit Polyclonal Antibody**  
**Catalog #: APRab09234**



## Summary

<b>Production Name</b>	Connexin 46 Rabbit Polyclonal Antibody
<b>Description</b>	Rabbit Polyclonal Antibody
<b>Host</b>	Rabbit
<b>Application</b>	IHC,ELISA
<b>Reactivity</b>	Human,Mouse,Rat

## Performance

<b>Conjugation</b>	Unconjugated
<b>Modification</b>	Unmodified
<b>Isotype</b>	IgG
<b>Clonality</b>	Polyclonal
<b>Form</b>	Liquid
<b>Storage</b>	Store at 4°C short term. Aliquot and store at -20°C long term. Avoid freeze/thaw cycles.
<b>Buffer</b>	Liquid in PBS containing 50% glycerol, 0.5% BSA and 0.02% New type preservative N.
<b>Purification</b>	Affinity purification

## Immunogen

<b>Gene Name</b>	GJA3
<b>Alternative Names</b>	GJA3; Gap junction alpha-3 protein; Connexin-46; Cx46
<b>Gene ID</b>	2700.0
<b>SwissProt ID</b>	Q9Y6H8.The antiserum was produced against synthesized peptide derived from human GJA3. AA range:151-200

## Application

<b>Dilution Ratio</b>	IHC 1:100-500;ELISA 1:5000-20000
<b>Molecular Weight</b>	

## Background

The protein encoded by this gene is a connexin and is a component of lens fiber gap junctions. Defects in this gene are a

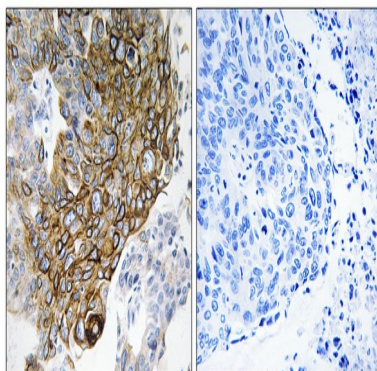
**Product Name: Connexin 46 Rabbit Polyclonal Antibody**  
**Catalog #: APRab09234**



cause of zonular pulverulent cataract type 3 (CZP3). [provided by RefSeq, Jan 2010],disease:Defects in GJA3 are the cause of zonular pulverulent cataract type 3 (CZP3) [MIM:601885]. CZP3 is a form of autosomal dominant congenital cataract.,function:One gap junction consists of a cluster of closely packed pairs of transmembrane channels, the connexons, through which materials of low MW diffuse from one cell to a neighboring cell.,similarity:Belongs to the connexin family. Alpha-type (group II) subfamily.,subunit:A connexon is composed of a hexamer of connexins. This particular connexin is a component of lens fiber gap junctions, can form both junctional and non-junctional ("hemi-") channels.,

## Research Area

## Image Data



Immunohistochemistry analysis of paraffin-embedded human lung carcinoma tissue, using GJA3 Antibody. The picture on the right is blocked with the synthesized peptide.

## Note

For research use only.