

Summary

Production Name	COL4A2 Rabbit Polyclonal Antibody
Description	Rabbit Polyclonal Antibody
Host	Rabbit
Application	IF,IHC,WB,ELISA
Reactivity	Human,Mouse

Performance

Conjugation	Unconjugated
Modification	Unmodified
Isotype	IgG
Clonality	Polyclonal
Form	Liquid
Storage	Store at 4°C short term. Aliquot and store at -20°C long term. Avoid freeze/thaw cycles.
Buffer	Liquid in PBS containing 50% glycerol, 0.5% BSA and 0.02% New type preservative N.
Purification	Affinity purification

Immunogen

Gene Name	COL4A2
Alternative Names	COL4A2; Collagen alpha-2(IV) chain
Gene ID	1284.0
SwissProt ID	P08572.The antiserum was produced against synthesized peptide derived from human Collagen IV alpha2. AA range:151-200

Application

Dilution Ratio	WB 1:500 - 1:2000. IHC 1:100 - 1:300. IF 1:200 - 1:1000. ELISA: 1:20000. Not yet tested in other applications.
Molecular Weight	150kD

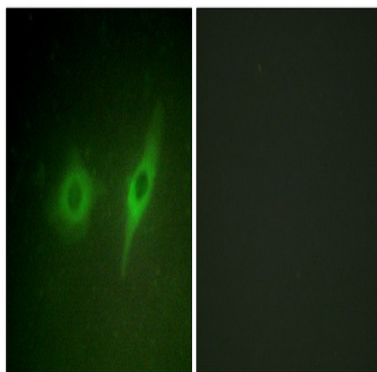
Background

This gene encodes one of the six subunits of type IV collagen, the major structural component of basement membranes. The C-terminal portion of the protein, known as canstatin, is an inhibitor of angiogenesis and tumor growth. Like the other members of the type IV collagen gene family, this gene is organized in a head-to-head conformation with another type IV collagen gene so that each gene pair shares a common promoter. [provided by RefSeq, Jul 2008],domain:Alpha chains of type IV collagen have a non-collagenous domain (NC1) at their C-terminus, frequent interruptions of the G-X-Y repeats in the long central triple-helical domain (which may cause flexibility in the triple helix), and a short N-terminal triple-helical 7S domain.,function:Type IV collagen is the major structural component of glomerular basement membranes (GBM), forming a 'chicken-wire' meshwork together with laminins, proteoglycans and entactin/nidogen. Potently inhibits angiogenesis and tumor growth.,PTM:Prolines at the third position of the tripeptide repeating unit (G-X-Y) are hydroxylated in some or all of the chains.,PTM:The trimeric structure of the NC1 domains may be stabilized by covalent bonds between Lys and Met residues.,PTM:Type IV collagens contain numerous cysteine residues which are involved in inter- and intramolecular disulfide bonding. 12 of these, located in the NC1 domain, are conserved in all known type IV collagens.,similarity:Belongs to the type IV collagen family.,similarity:Contains 1 collagen IV NC1 (C-terminal non-collagenous) domain.,subunit:There are six type IV collagen isoforms, alpha 1(IV)-alpha 6(IV), each of which can form a triple helix structure with 2 other chains to generate type IV collagen network.,

Research Area

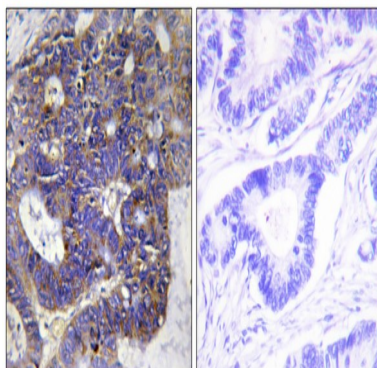
Focal adhesion;ECM-receptor interaction;Pathways in cancer;Small cell lung cancer;

Image Data

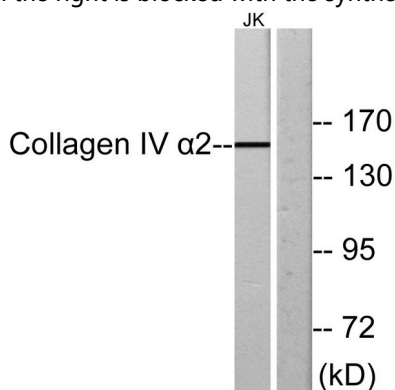


Immunofluorescence analysis of HeLa cells, using Collagen IV alpha2 Antibody. The picture on the right is blocked with the synthesized peptide.

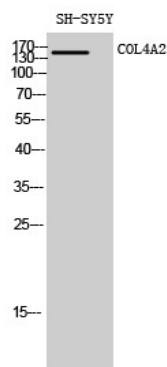
Product Name: COL4A2 Rabbit Polyclonal Antibody
Catalog #: APRab09186



Immunohistochemistry analysis of paraffin-embedded human colon carcinoma tissue, using Collagen IV alpha2 Antibody.
The picture on the right is blocked with the synthesized peptide.

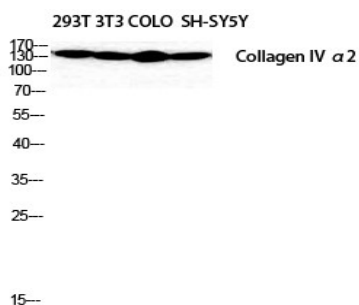


Western blot analysis of lysates from Jurkat cells, using Collagen IV alpha2 Antibody. The lane on the right is blocked with the synthesized peptide.



Western Blot analysis of SH-SY5Y cells using COL4A2 Polyclonal Antibody diluted at 1 : 2000

Product Name: COL4A2 Rabbit Polyclonal Antibody
Catalog #: APRab09186



Western Blot analysis of SH-SY5Y 293T NIH-3T3 COLO cells using COL4A2 Polyclonal Antibody diluted at 1: 2000

Note

For research use only.