

Summary

Production Name	COL11A1 Rabbit Polyclonal Antibody
Description	Rabbit Polyclonal Antibody
Host	Rabbit
Application	WB,ELISA
Reactivity	Human,Mouse

Performance

Conjugation	Unconjugated
Modification	Unmodified
Isotype	IgG
Clonality	Polyclonal
Form	Liquid
Storage	Store at 4°C short term. Aliquot and store at -20°C long term. Avoid freeze/thaw cycles.
Buffer	Liquid in PBS containing 50% glycerol, 0.5% BSA and 0.02% New type preservative N.
Purification	Affinity purification

Immunogen

Gene Name	COL11A1
Alternative Names	COL11A1; COLL6; Collagen alpha-1(XI) chain
Gene ID	1301.0
SwissProt ID	P12107.The antiserum was produced against synthesized peptide derived from human Collagen XI alpha1. AA range:581-630

Application

Dilution Ratio	WB 1:500-1:2000; ELISA 2000-20000
Molecular Weight	181kD

Background

Product Name: COL11A1 Rabbit Polyclonal Antibody
Catalog #: APRab09163



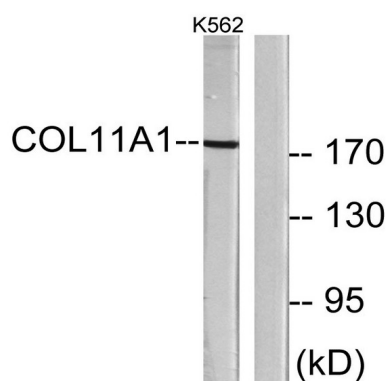
collagen type XI alpha 1 chain(COL11A1) Homo sapiens This gene encodes one of the two alpha chains of type XI collagen, a minor fibrillar collagen. Type XI collagen is a heterotrimer but the third alpha chain is a post-translationally modified alpha 1 type II chain. Mutations in this gene are associated with type II Stickler syndrome and with Marshall syndrome. A single-nucleotide polymorphism in this gene is also associated with susceptibility to lumbar disc herniation. Multiple transcript variants have been identified for this gene. [provided by RefSeq, Nov 2009],alternative products:Additional isoforms seem to exist. There is alternative usage of exon IIA or exon IIB. Transcripts containing exon IIA or IIB are present in cartilage, but exon IIB is preferentially utilized in transcripts from tendon,disease:Defects in COL11A1 are the cause of Marshall syndrome [MIM:154780]. It is an autosomal dominant disorder with ocular, orofacial, auditory and skeletal manifestations. It shares several features with Stickler syndrome, such as midfacial hypoplasia, high myopia, and sensorineural-hearing deficit.,disease:Defects in COL11A1 are the cause of Stickler syndrome type 2 (STL2) [MIM:604841]; also known as Stickler syndrome vitreous type 2. STL2 is an autosomal dominant form of Stickler syndrome, an inherited disorder that associates ocular signs with more or less complete forms of Pierre Robin sequence, bone disorders and sensorineural deafness. Ocular disorders may include juvenile cataract, myopia, strabismus, vitreoretinal or chorioretinal degeneration, retinal detachment, and chronic uveitis. Robin sequence includes an opening in the roof of the mouth (a cleft palate), a large tongue (macroglossia), and a small lower jaw (micrognathia). Bones are affected by slight platyspondylis and large, often defective epiphyses. Juvenile joint laxity is followed by early signs of arthrosis. The degree of hearing loss varies among affected individuals and may become more severe over time. Syndrome expressivity is variable.,function:May play an important role in fibrillogenesis by controlling lateral growth of collagen II fibrils.,PTM:Prolines at the third position of the tripeptide repeating unit (G-X-Y) are hydroxylated in some or all of the chains.,similarity:Belongs to the fibrillar collagen family.,similarity:Contains 1 TSP N-terminal (TSPN) domain.,subunit:Trimers composed of three different chains: alpha 1(XI), alpha 2(XI), and alpha 3(XI). Alpha 3(XI) is a post-translational modification of alpha 1(II). Alpha 1(V) can also be found instead of alpha 3(XI)=1(II).,tissue specificity:Cartilage, placenta and some tumor or virally transformed cell lines. Isoforms using exon IIA or IIB are found in the cartilage while isoforms using only exon IIB are found in the tendon.,

Research Area

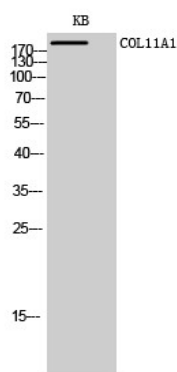
Focal adhesion;ECM-receptor interaction;

Image Data

Product Name: COL11A1 Rabbit Polyclonal Antibody
Catalog #: APRab09163



Western blot analysis of lysates from K562 cells, using Collagen XI alpha1 Antibody. The lane on the right is blocked with the synthesized peptide.



Western Blot analysis of KB cells using COL11A1 Polyclonal Antibody diluted at 1: 1000

Note

For research use only.