

**Product Name: CMTM5 Rabbit Polyclonal Antibody**  
**Catalog #: APRab09088**



## Summary

<b>Production Name</b>	CMTM5 Rabbit Polyclonal Antibody
<b>Description</b>	Rabbit Polyclonal Antibody
<b>Host</b>	Rabbit
<b>Application</b>	WB,IHC,ELISA
<b>Reactivity</b>	Human,Rat,Mouse

## Performance

<b>Conjugation</b>	Unconjugated
<b>Modification</b>	Unmodified
<b>Isotype</b>	IgG
<b>Clonality</b>	Polyclonal
<b>Form</b>	Liquid
<b>Storage</b>	Store at 4°C short term. Aliquot and store at -20°C long term. Avoid freeze/thaw cycles.
<b>Buffer</b>	Liquid in PBS containing 50% glycerol, 0.5% BSA and 0.02% New type preservative N.
<b>Purification</b>	Affinity purification

## Immunogen

<b>Gene Name</b>	CMTM5
<b>Alternative Names</b>	CMTM5; CKLFSF5; CKLF-like MARVEL transmembrane domain-containing protein 5; Chemokine-like factor superfamily member 5
<b>Gene ID</b>	116173.0
<b>SwissProt ID</b>	Q96DZ9.The antiserum was produced against synthesized peptide derived from the N-terminal region of human CMTM5. AA range:1-50

## Application

<b>Dilution Ratio</b>	WB 1:500 - 1:2000. IHC-p: 1:100-1:300. ELISA: 1:20000..
<b>Molecular Weight</b>	25kD

**Product Name: CMTM5 Rabbit Polyclonal Antibody**  
**Catalog #: AP Rab09088**

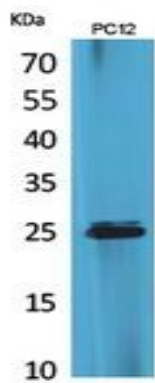


## Background

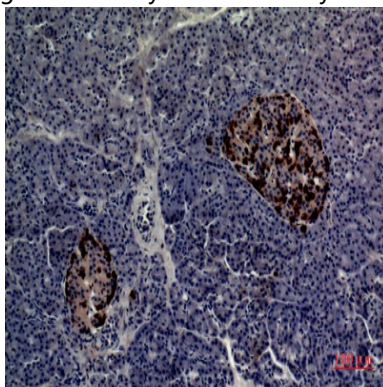
This gene encodes a member of the chemokine-like factor superfamily. This family of genes encodes multi-pass membrane proteins that are similar to both the chemokine and the transmembrane 4 superfamilies of signaling molecules. The encoded protein may exhibit tumor suppressor activity. Alternative splicing results in multiple transcript variants. [provided by RefSeq, Jan 2014],similarity:Belongs to the chemokine-like factor family.,similarity:Contains 1 MARVEL domain.,tissue specificity:Highly expressed in the brain.,

## Research Area

## Image Data



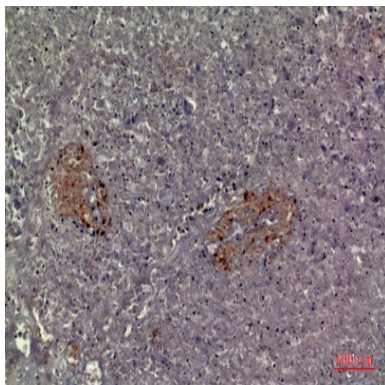
Western Blot analysis of PC12 cells using CMTM5 Polyclonal Antibody.. Secondary antibody was diluted at 1:20000



Immunohistochemical analysis of paraffin-embedded human-pancreas, antibody was diluted at 1:100

**Product Name: CMTM5 Rabbit Polyclonal Antibody**  
**Catalog #: APRab09088**

---



Immunohistochemical analysis of paraffin-embedded human-pancreas, antibody was diluted at 1:100

### **Note**

For research use only.