

Product Name: CLP36 Rabbit Polyclonal Antibody
Catalog #: APRab09062



Summary

Production Name	CLP36 Rabbit Polyclonal Antibody
Description	Rabbit Polyclonal Antibody
Host	Rabbit
Application	IF,IHC,WB,ELISA
Reactivity	Human,Mouse,Rat

Performance

Conjugation	Unconjugated
Modification	Unmodified
Isotype	IgG
Clonality	Polyclonal
Form	Liquid
Storage	Store at 4°C short term. Aliquot and store at -20°C long term. Avoid freeze/thaw cycles.
Buffer	Liquid in PBS containing 50% glycerol, 0.5% BSA and 0.02% New type preservative N.
Purification	Affinity purification

Immunogen

Gene Name	PDLIM1
Alternative Names	PDLIM1; CLIM1; CLP36; PDZ and LIM domain protein 1; C-terminal LIM domain protein 1; Elfin; LIM domain protein CLP-36
Gene ID	9124.0
SwissProt ID	O00151.The antiserum was produced against synthesized peptide derived from human PDLIM1. AA range:61-110

Application

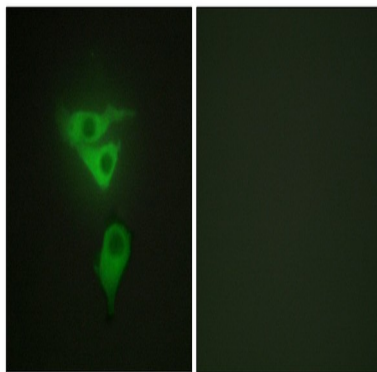
Dilution Ratio	WB 1:500 - 1:2000. IHC 1:100 - 1:300. IF 1:200 - 1:1000. ELISA: 1:5000. Not yet tested in other applications.
Molecular Weight	36kD

Background

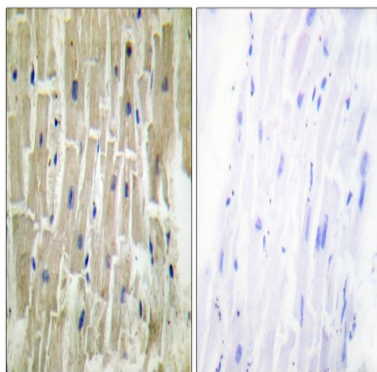
This gene encodes a member of the enigma protein family. The protein contains two protein interacting domains, a PDZ domain at the amino terminal end and one to three LIM domains at the carboxyl terminal. It is a cytoplasmic protein associated with the cytoskeleton. The protein may function as an adapter to bring other LIM-interacting proteins to the cytoskeleton. Pseudogenes associated with this gene are located on chromosomes 3, 14 and 17. [provided by RefSeq, Oct 2012],function:Cytoskeletal protein that may act as an adapter that brings other proteins (like kinases) to the cytoskeleton.,similarity:Contains 1 LIM zinc-binding domain.,similarity:Contains 1 PDZ (DHR) domain.,subcellular location:Associates with the actin stress fibers.,subunit:Interacts with alpha-actinins 1, 2 and 4.,tissue specificity:Strongly expressed in the heart and skeletal muscle, moderately expressed in the spleen, small intestine, colon, placenta, and lung. A lower level expression is seen in liver, thymus, kidney, prostate and pancreas and is not found in the brain, testis, ovary, and peripheral blood leukocytes.,

Research Area

Image Data



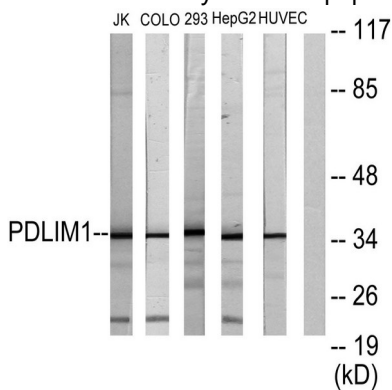
Immunofluorescence analysis of HepG2 cells, using PDLIM1 Antibody. The picture on the right is blocked with the synthesized peptide.



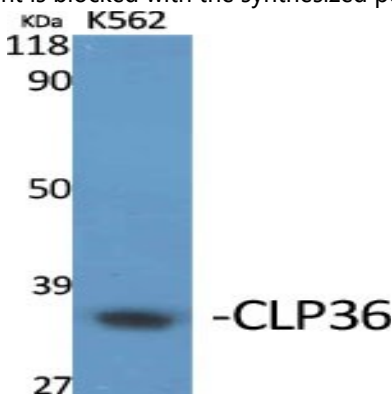
Product Name: CLP36 Rabbit Polyclonal Antibody
Catalog #: APRab09062



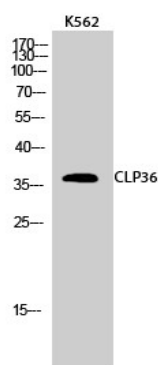
Immunohistochemistry analysis of paraffin-embedded human heart tissue, using PDLIM1 Antibody. The picture on the right is blocked with the synthesized peptide.



Western blot analysis of lysates from Jurkat, COLO205, 293, HepG2, and HUVEC cells, using PDLIM1 Antibody. The lane on the right is blocked with the synthesized peptide.



Western Blot analysis of various cells using CLP36 Polyclonal Antibody diluted at 1 : 1000



Western Blot analysis of K562 cells using CLP36 Polyclonal Antibody diluted at 1 : 1000

Note

For research use only.