

Product Name: CLK4 Rabbit Polyclonal Antibody
Catalog #: APRab09051



Summary

| | |
|------------------------|---------------------------------|
| Production Name | CLK4 Rabbit Polyclonal Antibody |
| Description | Rabbit Polyclonal Antibody |
| Host | Rabbit |
| Application | WB,IHC |
| Reactivity | Human,Mouse |

Performance

| | |
|---------------------|------------------------------------------------------------------------------------------|
| Conjugation | Unconjugated |
| Modification | Unmodified |
| Isotype | IgG |
| Clonality | Polyclonal |
| Form | Liquid |
| Storage | Store at 4°C short term. Aliquot and store at -20°C long term. Avoid freeze/thaw cycles. |
| Buffer | Liquid in PBS containing 50% glycerol, 0.5% BSA and 0.02% New type preservative N. |
| Purification | Affinity purification |

Immunogen

| | |
|--------------------------|---------------------------------------------------------------------------------------------------------|
| Gene Name | CLK4 |
| Alternative Names | CLK4; Dual specificity protein kinase CLK4; CDC-like kinase 4 |
| Gene ID | 57396.0 |
| SwissProt ID | Q9HAZ1.The antiserum was produced against synthesized peptide derived from human CLK4. AA range:101-150 |

Application

| | |
|-------------------------|--------------------------------------------------------|
| Dilution Ratio | WB 1:500 - 1:2000. IHC 1:100 - 1:300. ELISA: 1:10000.. |
| Molecular Weight | 65kD |

Background

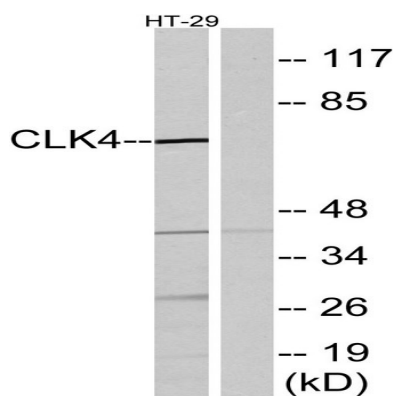
Product Name: CLK4 Rabbit Polyclonal Antibody
Catalog #: APRab09051



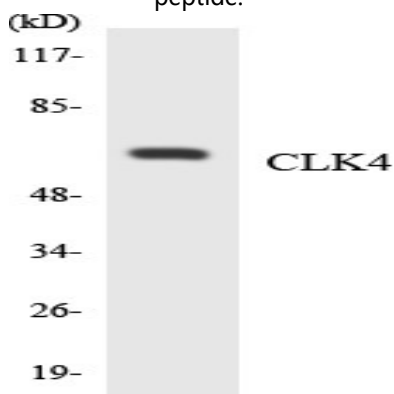
CDC like kinase 4(CLK4) Homo sapiens The protein encoded by this gene belongs to the CDC2-like protein kinase (CLK) family. This protein kinase can interact with and phosphorylate the serine- and arginine-rich (SR) proteins, which are known to play an important role in the formation of spliceosomes, and thus may be involved in the regulation of alternative splicing. Studies in the Israeli sand rat *Psammomys obesus* suggested that the ubiquitin-like 5 (UBL5/BEACON), a highly conserved ubiquitin-like protein, may interact with and regulate the activity of this kinase. Multiple alternatively spliced transcript variants have been observed, but the full-length natures of which have not yet been determined. [provided by RefSeq, Jul 2008],catalytic activity:ATP + a protein = ADP + a phosphoprotein.,function:Phosphorylates serine- and arginine-rich (SR) proteins of the spliceosomal complex may be a constituent of a network of regulatory mechanisms that enable SR proteins to control RNA splicing. Phosphorylates serines, threonines and tyrosines. Required for the regulation of alternative splicing of MAPT/TAU.,PTM:Autophosphorylates on all three types of residues.,similarity:Belongs to the protein kinase superfamily. CMGC Ser/Thr protein kinase family. Lammer subfamily.,similarity:Contains 1 protein kinase domain.,subunit:Interacts with UBL5.,tissue specificity:Expressed in liver, kidney, heart, muscle and brain.,

Research Area

Image Data



Western blot analysis of lysates from HT-29 cells, using CLK4 Antibody. The lane on the right is blocked with the synthesized peptide.



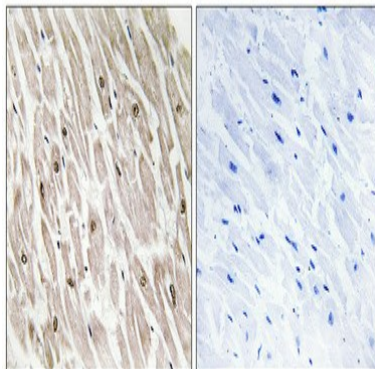
Product Name: CLK4 Rabbit Polyclonal Antibody
Catalog #: APRab09051



Western blot analysis of the lysates from HeLa cells using CLK4 antibody.



Western Blot analysis of various cells using CLK4 Polyclonal Antibody cells nucleus extracted by Minute TM Cytoplasmic and Nuclear Fractionation kit (SC-003, Inventbiotech, MN, USA) .



Immunohistochemical analysis of paraffin-embedded Human heart. Antibody was diluted at 1:100 (4°, overnight) . High-pressure and temperature Tris-EDTA, pH8.0 was used for antigen retrieval. Negative contrl (right) obtained from antibody was pre-absorbed by immunogen peptide.

Note

For research use only.