

Product Name: CLIC6 Rabbit Polyclonal Antibody
Catalog #: APRab09042



Summary

Production Name	CLIC6 Rabbit Polyclonal Antibody
Description	Rabbit Polyclonal Antibody
Host	Rabbit
Application	WB,ELISA
Reactivity	Human,Rat,Mouse

Performance

Conjugation	Unconjugated
Modification	Unmodified
Isotype	IgG
Clonality	Polyclonal
Form	Liquid
Storage	Store at 4°C short term. Aliquot and store at -20°C long term. Avoid freeze/thaw cycles.
Buffer	Liquid in PBS containing 50% glycerol, 0.5% BSA and 0.02% New type preservative N.
Purification	Affinity purification

Immunogen

Gene Name	CLIC6
Alternative Names	CLIC6; CLIC1L; Chloride intracellular channel protein 6; Parchorin
Gene ID	54102.0
SwissProt ID	Q96NY7.The antiserum was produced against synthesized peptide derived from human CLIC6. AA range:411-460

Application

Dilution Ratio	WB 1:500 - 1:2000. ELISA: 1:40000.
Molecular Weight	75kD

Background

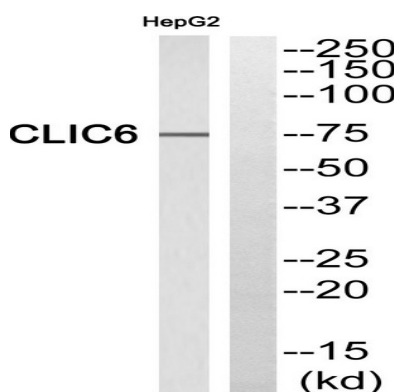
Product Name: CLIC6 Rabbit Polyclonal Antibody
Catalog #: AP Rab09042



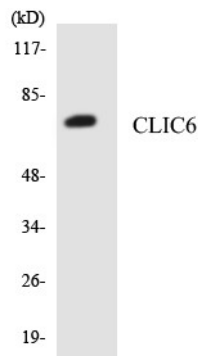
chloride intracellular channel 6 (CLIC6) Homo sapiens This gene encodes a member of the chloride intracellular channel family of proteins. The gene is part of a large triplicated region found on chromosomes 1, 6, and 21. Alternative splicing results in multiple transcript variants encoding different isoforms. [provided by RefSeq, Nov 2015], domain: Members of this family may change from a globular, soluble state to a state where the N-terminal domain is inserted into the membrane and functions as chloride channel. A conformation change of the N-terminal domain is thought to expose hydrophobic surfaces that trigger membrane insertion., function: May insert into membranes and form chloride ion channels. May play a critical role in water-secreting cells, possibly through the regulation of chloride ion transport., PTM: Phosphorylated., similarity: Belongs to the chloride channel CLIC family., similarity: Contains 1 GST C-terminal domain., subcellular location: Predominantly cytoplasmic. Upon chloride ion efflux from the cell, it is translocated to the plasma membrane., subunit: Interacts with dopamine receptors DRD2, DRD3 and DRD4., tissue specificity: Expressed in brain, placenta, pancreas and liver.,

Research Area

Image Data



Western blot analysis of CLIC6 Antibody. The lane on the right is blocked with the CLIC6 peptide.



Western blot analysis of the lysates from HepG2 cells using CLIC6 antibody.

Product Name: CLIC6 Rabbit Polyclonal Antibody
Catalog #: APRab09042



Note

For research use only.