

**Product Name: Cleaved-Plasma Kallikrein HC (R390)
Rabbit Polyclonal Antibody
Catalog #: APRab09027**



Summary

Production Name	Cleaved-Plasma Kallikrein HC (R390) Rabbit Polyclonal Antibody
Description	Rabbit Polyclonal Antibody
Host	Rabbit
Application	WB,ELISA
Reactivity	Human,Rat,Mouse

Performance

Conjugation	Unconjugated
Modification	Unmodified
Isotype	IgG
Clonality	Polyclonal
Form	Liquid
Storage	Store at 4°C short term. Aliquot and store at -20°C long term. Avoid freeze/thaw cycles.
Buffer	Liquid in PBS containing 50% glycerol, 0.5% BSA and 0.02% New type preservative N.
Purification	Affinity purification

Immunogen

Gene Name	KLKB1
Alternative Names	KLKB1; KLK3; Plasma kallikrein; Fletcher factor; Kininogenin; Plasma prekallikrein
Gene ID	3818.0
SwissProt ID	P03952.The antiserum was produced against synthesized peptide derived from human KLKB1. AA range:341-390

Application

Dilution Ratio	WB 1:500 - 1:2000. ELISA: 1:10000..
Molecular Weight	45kD

Product Name: Cleaved-Plasma Kallikrein HC (R390)
Rabbit Polyclonal Antibody
Catalog #: APRab09027



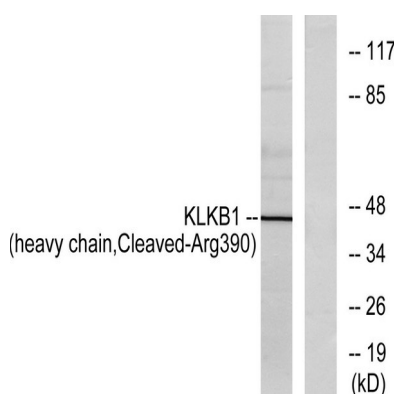
Background

This gene encodes a glycoprotein that participates in the surface-dependent activation of blood coagulation, fibrinolysis, kinin generation and inflammation. The encoded preproprotein present in plasma as a non-covalent complex with high molecular weight kininogen undergoes proteolytic processing mediated by activated coagulation factor XII to generate a disulfide-linked, heterodimeric serine protease comprised of heavy and light chains. Certain mutations in this gene cause prekallikrein deficiency. Alternative splicing results in multiple transcript variants encoding different isoforms. [provided by RefSeq, Jan 2016], catalytic activity: Cleaves selectively Arg-Xaa and Lys-Xaa bonds, including Lys-Arg and Arg-Ser bonds in (human) kininogen to release bradykinin., disease: Defects in KLKB1 are the cause of prekallikrein deficiency (PKK deficiency) [MIM:612423]; also called Fletcher factor deficiency. This disorder is a blood coagulation defect., function: The enzyme cleaves Lys-Arg and Arg-Ser bonds. It activates, in a reciprocal reaction, factor XII after its binding to a negatively charged surface. It also releases bradykinin from HMW kininogen and may also play a role in the renin-angiotensin system by converting prorenin into renin., similarity: Belongs to the peptidase S1 family., similarity: Belongs to the peptidase S1 family. Plasma kallikrein subfamily., similarity: Contains 1 peptidase S1 domain., similarity: Contains 4 apple domains., subunit: The zymogen is activated by factor XIIa, which cleaves the molecule into a light chain, which contains the active site, and a heavy chain, which associates with HMW kininogen. These chains are linked by one or more disulfide bonds.,

Research Area

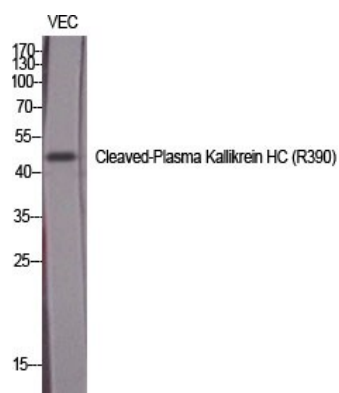
Complement and coagulation cascades;

Image Data

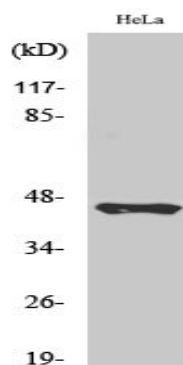


Western blot analysis of lysates from HeLa cells, using KLKB1 (heavy chain, Cleaved-Arg390) Antibody. The lane on the right is blocked with the synthesized peptide.

Product Name: Cleaved-Plasma Kallikrein HC (R390)
Rabbit Polyclonal Antibody
Catalog #: APRab09027



Western Blot analysis of various cells using Cleaved-Plasma Kallikrein HC (R390) Polyclonal Antibody diluted at 1: 1000



Western Blot analysis of HeLa cells using Cleaved-Plasma Kallikrein HC (R390) Polyclonal Antibody diluted at 1: 1000

Note

For research use only.