

Product Name: Cleaved-MMP-17 (Q129) Rabbit Polyclonal Antibody
Catalog #: APRab09013

Summary

Production Name	Cleaved-MMP-17 (Q129) Rabbit Polyclonal Antibody
Description	Rabbit Polyclonal Antibody
Host	Rabbit
Application	WB,ELISA
Reactivity	Human,Rat,Mouse

Performance

Conjugation	Unconjugated
Modification	Unmodified
Isotype	IgG
Clonality	Polyclonal
Form	Liquid
Storage	Store at 4°C short term. Aliquot and store at -20°C long term. Avoid freeze/thaw cycles.
Buffer	Liquid in PBS containing 50% glycerol, 0.5% BSA and 0.02% New type preservative N.
Purification	Affinity purification

Immunogen

Gene Name	MMP17
Alternative Names	MMP17; MT4MMP; Matrix metalloproteinase-17; MMP-17; Membrane-type matrix metalloproteinase 4; MT-MMP 4; MTMMP4; Membrane-type-4 matrix metalloproteinase; MT4-MMP; MT4MMP
Gene ID	4326.0
SwissProt ID	Q9ULZ9.The antiserum was produced against synthesized peptide derived from human MMP17. AA range:110-159

Application

Dilution Ratio	WB 1:500 - 1:2000. ELISA: 1:10000
Molecular Weight	53kD

Product Name: Cleaved-MMP-17 (Q129) Rabbit Polyclonal Antibody
Catalog #: APRab09013

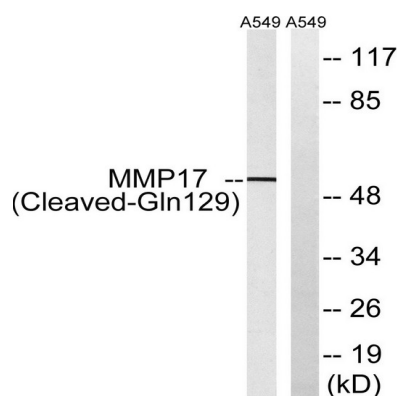
Background

This gene encodes a member of the peptidase M10 family and membrane-type subfamily of matrix metalloproteinases (MMPs). Proteins in this family are involved in the breakdown of extracellular matrix in normal physiological processes, such as embryonic development, reproduction, and tissue remodeling, as well as in disease processes, such as arthritis and metastasis. Members of this subfamily contain a transmembrane domain suggesting that these proteins are expressed at the cell surface rather than secreted. The encoded preproprotein is proteolytically processed to generate the mature protease. This protein is unique among the membrane-type matrix metalloproteinases in that it is anchored to the cell membrane via a glycosylphosphatidylinositol (GPI) anchor. Elevated expression of the encoded protein has been observed in osteoarthritis and multiple human cancers. [provided by RefSeq, Jan 2016],catalytic activity:Cleaves pro-TNF-alpha at the 74-Ala-|-Gln-75 site.,cofactor:Binds 1 zinc ion per subunit.,cofactor:Calcium.,domain:The conserved cysteine present in the cysteine-switch motif binds the catalytic zinc ion, thus inhibiting the enzyme. The dissociation of the cysteine from the zinc ion upon the activation-peptide release activates the enzyme.,function:Endopeptidase that degrades various components of the extracellular matrix, such as fibrin. May be involved in the activation of membrane-bound precursors of growth factors or inflammatory mediators, such as tumor necrosis factor-alpha. May also be involved in tumoral process. Not obvious if able to proteolytically activate procollagenase A. Does not hydrolyze collagen types I, II, III, IV and V, gelatin, fibronectin, laminin, decorin nor alpha1-antitrypsin.,PTM:The precursor is cleaved by a furin endopeptidase.,similarity:Belongs to the peptidase M10A family.,similarity:Contains 4 hemopexin-like domains.,tissue specificity:Expressed in brain, leukocytes, colon, ovary testis and breast cancer. Expressed also in many transformed and non-transformed cell types.,

Research Area

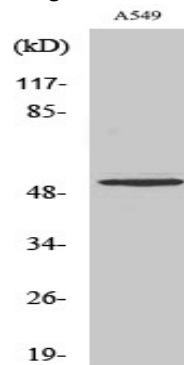
Angiogenesis

Image Data



**Product Name: Cleaved-MMP-17 (Q129) Rabbit
Polyclonal Antibody
Catalog #: APRab09013**

Western blot analysis of lysates from A549 cells, treated with etoposide 25uM 1h, using MMP17 (Cleaved-Gln129) Antibody. The lane on the right is blocked with the synthesized peptide.



Western Blot analysis of various cells using Cleaved-MMP-17 (Q129) Polyclonal Antibody

Note

For research use only.