

Product Name: Cleaved-ITI-H4 70k (R661) Rabbit Polyclonal Antibody
Catalog #: APRab09001

Summary

Production Name	Cleaved-ITI-H4 70k (R661) Rabbit Polyclonal Antibody
Description	Rabbit Polyclonal Antibody
Host	Rabbit
Application	IHC,ELISA
Reactivity	Human,Rat,Mouse

Performance

Conjugation	Unconjugated
Modification	Unmodified
Isotype	IgG
Clonality	Polyclonal
Form	Liquid
Storage	Store at 4°C short term. Aliquot and store at -20°C long term. Avoid freeze/thaw cycles.
Buffer	Liquid in PBS containing 50% glycerol, 0.5% BSA and 0.02% New type preservative N.
Purification	Affinity purification

Immunogen

Gene Name	ITIH4 ITIH4; IHRP; ITIHL1; PK120; Inter-alpha-trypsin inhibitor heavy chain H4; ITI heavy chain
Alternative Names	H4; ITI-HC4; Inter-alpha-inhibitor heavy chain 4; Inter-alpha-trypsin inhibitor family heavy chain-related protein; IHRP; Plasma kallikrein sensitive
Gene ID	3700.0
SwissProt ID	Q14624.The antiserum was produced against synthesized peptide derived from human ITIH4. AA range:612-661

Application

Dilution Ratio	IHC 1:100-1:300 ELISA: 1:10000
Molecular Weight	

Product Name: Cleaved-ITI-H4 70k (R661) Rabbit Polyclonal Antibody
Catalog #: APRab09001

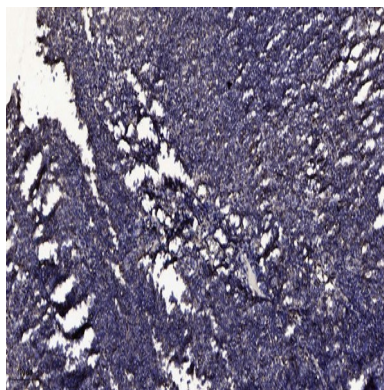


Background

The protein encoded by this gene is secreted into the blood, where it is cleaved by plasma kallikrein into two smaller forms. Expression of this gene has been detected only in liver, and it seems to be upregulated during surgical trauma. This gene is part of a cluster of similar genes on chromosome 3. Two transcript variants encoding different isoforms have been found for this gene. [provided by RefSeq, Oct 2009],function:May be involved in acute phase reactions.,induction:Levels increase significantly in the sera of patients after different surgical trauma.,PTM:Appears to be both N- and O-glycosylated.,PTM:Cleaved by plasma kallikrein to yield 100 kDa and 35 kDa fragments, and the resulting 100 kDa fragment is further converted to a 70 kDa fragment.,PTM:The O-linked polysaccharides on Ser-696, Thr-701 and Ser-702 are probably the mucin type linked to GalNAc.,similarity:Belongs to the ITIH family.,similarity:Contains 1 VWFA domain.,tissue specificity:Liver specific.,

Research Area

Image Data



Immunohistochemical analysis of paraffin-embedded human tonsil. 1, Antibody was diluted at 1:200 (4° overnight) . 2, Tris-EDTA,pH9.0 was used for antigen retrieval. 3,Secondary antibody was diluted at 1:200 (room temperature, 30min) .

Note

For research use only.