

Product Name: Cleaved-Cathepsin L2 (L114) Rabbit Polyclonal Antibody
Catalog #: APRab08978

Summary

Production Name	Cleaved-Cathepsin L2 (L114) Rabbit Polyclonal Antibody
Description	Rabbit Polyclonal Antibody
Host	Rabbit
Application	WB,ELISA
Reactivity	Human,Monkey

Performance

Conjugation	Unconjugated
Modification	Unmodified
Isotype	IgG
Clonality	Polyclonal
Form	Liquid
Storage	Store at 4°C short term. Aliquot and store at -20°C long term. Avoid freeze/thaw cycles.
Buffer	Liquid in PBS containing 50% glycerol, 0.5% BSA and 0.02% New type preservative N.
Purification	Affinity purification

Immunogen

Gene Name	CTSL2
Alternative Names	CTSL2; CATL2; CTSU; CTSV; Cathepsin L2; Cathepsin U; Cathepsin V
Gene ID	1515.0
SwissProt ID	O60911.The antiserum was produced against synthesized peptide derived from human CATL2. AA range:95-144

Application

Dilution Ratio	WB 1:500 - 1:2000. ELISA: 1:20000
Molecular Weight	37kD

Product Name: Cleaved-Cathepsin L2 (L114) Rabbit Polyclonal Antibody
Catalog #: APRab08978



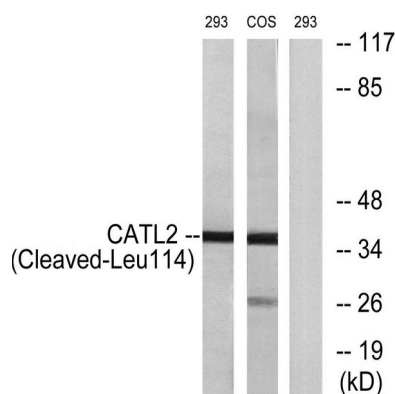
Background

The protein encoded by this gene, a member of the peptidase C1 family, is a lysosomal cysteine proteinase that may play an important role in corneal physiology. This gene is expressed in colorectal and breast carcinomas but not in normal colon, mammary gland, or peritumoral tissues, suggesting a possible role for this gene in tumor processes. Alternatively spliced variants, encoding the same protein, have been identified. [provided by RefSeq, Jan 2011], catalytic activity: The recombinant enzyme hydrolyzes proteins (serum albumin, collagen) and synthetic substrates (Z-Phe-Arg-NHMec > Z-Leu-Arg-NHMec > Z-Val-Arg-NHMec), function: Cysteine protease. May have an important role in corneal physiology, similarity: Belongs to the peptidase C1 family, tissue specificity: Predominantly expressed in the thymus and testis. Also expressed in corneal epithelium, and to a lesser extent in conjunctival epithelium and skin.,

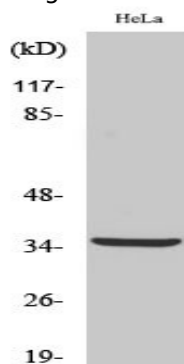
Research Area

Lysosome;

Image Data



Western blot analysis of lysates from 293 and COS cells, treated with etoposide 25uM 1h, using CATL2 (Cleaved-Leu114) Antibody. The lane on the right is blocked with the synthesized peptide.



Western Blot analysis of various cells using Cleaved-Cathepsin L2 (L114) Polyclonal Antibody

**Product Name: Cleaved-Cathepsin L2 (L114) Rabbit
Polyclonal Antibody
Catalog #: APRab08978**



Note

For research use only.