

**Product Name: Cleaved-Cathepsin D LC (G65) Rabbit Polyclonal Antibody**  
**Catalog #: APRab08975**

---

## Summary

|                        |   |
|------------------------|---|
| <b>Production Name</b> | Cleaved-Cathepsin D LC (G65) Rabbit Polyclonal Antibody |
| <b>Description</b>     | Rabbit Polyclonal Antibody                              |
| <b>Host</b>            | Rabbit  |
| <b>Application</b>     | WB,ELISA  |
| <b>Reactivity</b>      | Human,Monkey  |

## Performance

|                     |  |
|---------------------|--|
| <b>Conjugation</b>  | Unconjugated   |
| <b>Modification</b> | Unmodified   |
| <b>Isotype</b>      | IgG  |
| <b>Clonality</b>    | Polyclonal   |
| <b>Form</b>         | Liquid   |
| <b>Storage</b>      | Store at 4°C short term. Aliquot and store at -20°C long term. Avoid freeze/thaw cycles. |
| <b>Buffer</b>       | Liquid in PBS containing 50% glycerol, 0.5% BSA and 0.02% New type preservative N.       |
| <b>Purification</b> | Affinity purification  |

## Immunogen

|                          |   |
|--------------------------|---|
| <b>Gene Name</b>         | CTSD  |
| <b>Alternative Names</b> | CTSD; CPSD; Cathepsin D   |
| <b>Gene ID</b>           | 1509.0  |
| <b>SwissProt ID</b>      | P07339.The antiserum was produced against synthesized peptide derived from human CATD. AA range:46-95 |

## Application

|                         |                                   |
|-------------------------|-----------------------------------|
| <b>Dilution Ratio</b>   | WB 1:500 - 1:2000. ELISA: 1:20000 |
| <b>Molecular Weight</b> | 17kD                              |

**Product Name: Cleaved-Cathepsin D LC (G65) Rabbit Polyclonal Antibody**  
**Catalog #: APRab08975**



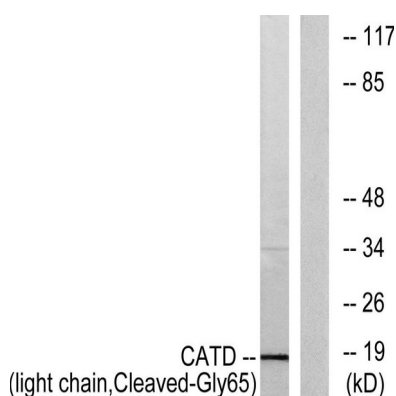
## Background

This gene encodes a member of the A1 family of peptidases. The encoded preproprotein is proteolytically processed to generate multiple protein products. These products include the cathepsin D light and heavy chains, which heterodimerize to form the mature enzyme. This enzyme exhibits pepsin-like activity and plays a role in protein turnover and in the proteolytic activation of hormones and growth factors. Mutations in this gene play a causal role in neuronal ceroid lipofuscinosis-10 and may be involved in the pathogenesis of several other diseases, including breast cancer and possibly Alzheimer's disease. [provided by RefSeq, Nov 2015],catalytic activity:Specificity similar to, but narrower than, that of pepsin A. Does not cleave the 4-Gln-|-His-5 bond in B chain of insulin.,disease:Defects in CTSD are the cause of neuronal ceroid lipofuscinosis 10 (CLN10) [MIM:610127]; also known as neuronal ceroid lipofuscinosis due to cathepsin D deficiency. The neuronal ceroid lipofuscinosis are a group of progressive neurodegenerative diseases in children and in adults, characterized by visual and mental decline, motor disturbance, epilepsy and behavioral changes.,function:Acid protease active in intracellular protein breakdown. Involved in the pathogenesis of several diseases such as breast cancer and possibly Alzheimer disease.,polymorphism:The Val-58 allele is significantly overrepresented in demented patients (11.8%) compared with non-demented controls (4.9%). Carriers of the Val-58 allele have a 3.1-fold increased risk for developing AD than non-carriers.,similarity:Belongs to the peptidase A1 family.,subcellular location:Identified by mass spectrometry in melanosome fractions from stage I to stage IV.,subunit:Consists of a light chain and a heavy chain.,

## Research Area

Lysosome;

## Image Data



Western blot analysis of lysates from COS7 cells, treated with etoposide 25uM 1h, using CATD (light chain, Cleaved-Gly65) Antibody. The lane on the right is blocked with the synthesized peptide.

**Product Name: Cleaved-Cathepsin D LC (G65) Rabbit  
Polyclonal Antibody**  
**Catalog #: APRab08975**

---



Western Blot analysis of various cells using Cleaved-Cathepsin D LC (G65) Polyclonal Antibody

### **Note**

For research use only.