

Product Name: CLD22 Rabbit Polyclonal Antibody
Catalog #: APRab08940



Summary

Production Name	CLD22 Rabbit Polyclonal Antibody
Description	Rabbit Polyclonal Antibody
Host	Rabbit
Application	WB
Reactivity	Human,Rat,Mouse

Performance

Conjugation	Unconjugated
Modification	Unmodified
Isotype	IgG
Clonality	Polyclonal
Form	Liquid
Storage	Store at 4°C short term. Aliquot and store at -20°C long term. Avoid freeze/thaw cycles.
Buffer	Liquid in PBS containing 50% glycerol, and 0.02% New type preservative N.
Purification	Affinity purification

Immunogen

Gene Name	CLDN22
Alternative Names	
Gene ID	53842.0
SwissProt ID	Q8N7P3.Synthesized peptide derived from part region of human protein AA range: 139-189

Application

Dilution Ratio	WB 1:500-2000 ELISA 1:5000-20000
Molecular Weight	24kD

Background

This gene encodes a member of the claudin family. Claudins are integral membrane proteins and components of tight

Product Name: CLD22 Rabbit Polyclonal Antibody
Catalog #: APRab08940

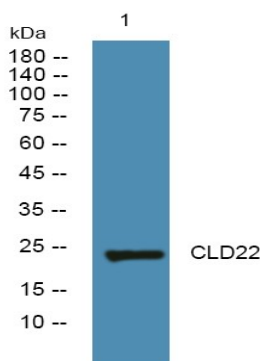


junction strands. Tight junction strands serve as a physical barrier to prevent solutes and water from passing freely through the paracellular space between epithelial or endothelial cell sheets, and also play critical roles in maintaining cell polarity and signal transductions. This gene is intronless and overlaps the 3' UTR of the WWC2 gene (GeneID: 80014) on the opposite strand. [provided by RefSeq, Aug 2010],function:Plays a major role in tight junction-specific obliteration of the intercellular space, through calcium-independent cell-adhesion activity.,similarity:Belongs to the claudin family.,

Research Area

Cell adhesion molecules (CAMs);Tight junction;Leukocyte transendothelial migration;

Image Data



Western blot analysis of lysates from SH-SY5Y cells, primary antibody was diluted at 1:1000, 4°over night

Note

For research use only.