

Product Name: CLC-6 Rabbit Polyclonal Antibody
Catalog #: APRab08925



Summary

Production Name	CLC-6 Rabbit Polyclonal Antibody
Description	Rabbit Polyclonal Antibody
Host	Rabbit
Application	WB,ELISA
Reactivity	Human,Mouse,Rat,Monkey

Performance

Conjugation	Unconjugated
Modification	Unmodified
Isotype	IgG
Clonality	Polyclonal
Form	Liquid
Storage	Store at 4°C short term. Aliquot and store at -20°C long term. Avoid freeze/thaw cycles.
Buffer	Liquid in PBS containing 50% glycerol, 0.5% BSA and 0.02% New type preservative N.
Purification	Affinity purification

Immunogen

Gene Name	CLCN6
Alternative Names	CLCN6; KIAA0046; Chloride transport protein 6; Chloride channel protein 6; CLC-6
Gene ID	1185.0
SwissProt ID	P51797.The antiserum was produced against synthesized peptide derived from human CLCN6. AA range:611-660

Application

Dilution Ratio	WB 1:500 - 1:2000. ELISA: 1:40000. Not yet tested in other applications.
Molecular Weight	97kD

Background

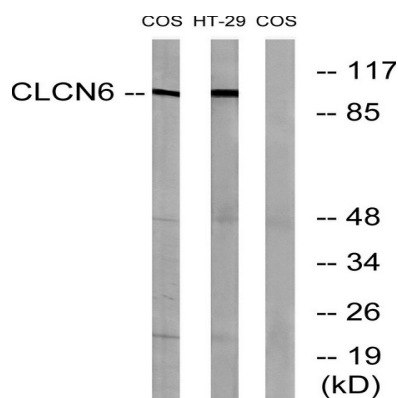
Product Name: CLC-6 Rabbit Polyclonal Antibody
Catalog #: APRab08925



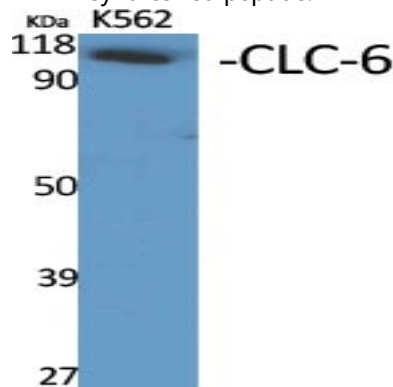
chloride voltage-gated channel 6 (CLCN6) Homo sapiens This gene encodes a member of the voltage-dependent chloride channel protein family. Members of this family can function as either chloride channels or antiporters. This protein is primarily localized to late endosomes and functions as a chloride/proton antiporter. Alternate splicing results in both coding and non-coding variants. Additional alternately spliced variants have been described but their full-length structure is unknown. [provided by RefSeq, Mar 2012],function:Chloride transport protein, initially identified as voltage-gated chloride channel. The presence of the conserved gating glutamate residues suggests that it functions as an antiporter.,miscellaneous:The CLC channel family contains both chloride channels and proton-coupled anion transporters that exchange chloride or another anion for protons. The presence of conserved gating glutamate residues is typical for family members that function as antiporters.,PTM:N-glycosylated on several asparagine residues.,similarity:Belongs to the chloride channel (TC 2.A.49) family.,similarity:Contains 2 CBS domains.,subcellular location:Detected in detergent-resistant lipid rafts.,tissue specificity:Testis, ovary, small intestine, brain and skeletal muscle. Low level expression in aortic and coronary vascular smooth muscle cells, and aortic endothelial cells. Isoform C is only detected in kidney.,

Research Area

Image Data



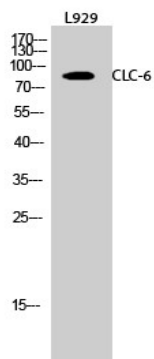
Western blot analysis of lysates from COS7 and HT-29 cells, using CLCN6 Antibody. The lane on the right is blocked with the synthesized peptide.



Product Name: CLC-6 Rabbit Polyclonal Antibody
Catalog #: APRab08925



Western Blot analysis of various cells using CLC-6 Polyclonal Antibody diluted at 1: 500



Western Blot analysis of L929 cells using CLC-6 Polyclonal Antibody diluted at 1: 500

Note

For research use only.